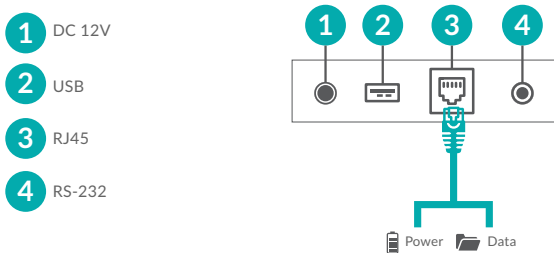


10" POS Android Advertising Displays



Power Over Ethernet (PoE)

Power your screen by using the power cable provided or supply the power over an Ethernet cable. This minimises the number of cables needed for installation as you can supply power and internet connectivity to the screen simultaneously.



24/7 Commercial Use

These displays use a commercial grade LCD panel and LED backlight. They have the ability to be in constant use 24/7 for over 70,000 hours and have no external buttons or controls to avoid tampering.



Plug and Play

Plug and Play is the most straightforward way to upload content to the screen. Simply load images and videos onto a USB stick, insert into the display, wait for your content to copy over and then remove. Your images and videos will now play in a continuous loop.



Free Scheduling Software

These displays come with free scheduling software for displaying different content at different times of the day. If you prefer to keep it simple you can update the screen directly without using the software.



Other Features

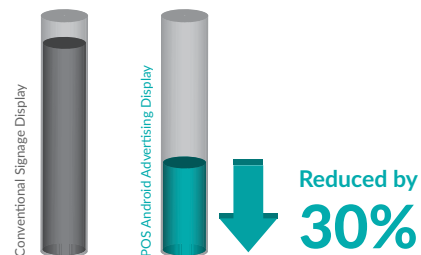
No Integrated Battery

Unlike domestic tablets these displays do not have built-in batteries and therefore last considerably longer. They are designed to be used constantly 24/7 in public spaces and can be powered directly from the mains or over PoE.



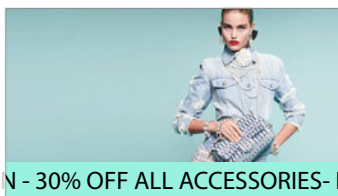
Low Power Consumption

The LED backlight technology provides improved brightness and contrast. Their lifespan is drastically improved to over 70,000 hours and the power consumption is reduced by around 30%.



Scrolling Text

You can display a "ticker tape" style scrolling text message along the bottom of the screen, to help you get your message across or help highlight any specific promotions or offers.

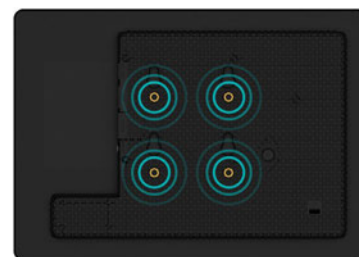


SALE NOW ON - 30% OFF ALL ACCESSORIES - ENDS TONIGHT

VESA Mounting Holes

Unlike domestic tablets these displays have an integrated and secure screw based mounting solution on the rear for easy wall or stand installation.

50 x 50
VESA



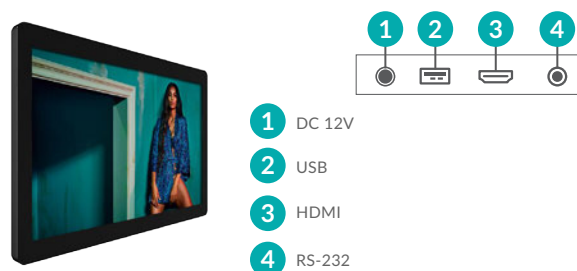
RS-232 Control

The screen can be used as a controller to send RS-232 commands to any compatible devices.



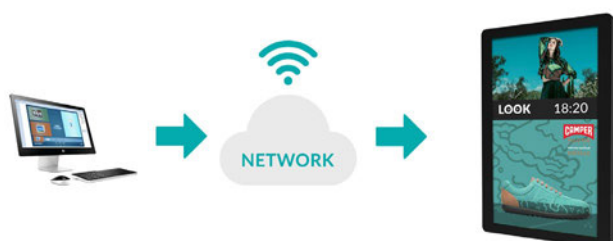
Monitor Version

If you want to use the screen to display an external source, such as a PC or media player via HDMI, we have a monitor version available on request.



Optional Network Upgrade

For a small charge you can upgrade your screen to be networked, allowing you to connect your screen via Wi-Fi, LAN or 4G, then remotely update it over the internet.



Touch Screen Upgrade

You can upgrade your display to be a PCAP touch screen to add the element of interactivity; increasing audience engagement.



Key Features



PLUG AND PLAY



FREE SCHEDULING SOFTWARE



RS-232 CONTROL



24/7 COMMERCIAL GRADE



ANDROID MEDIA PLAYER



POE



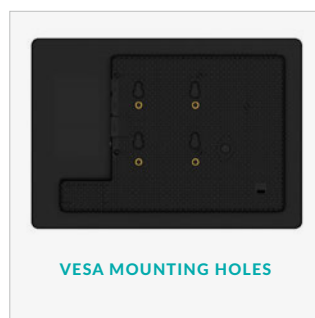
LANDSCAPE OR PORTRAIT ORIENTATION



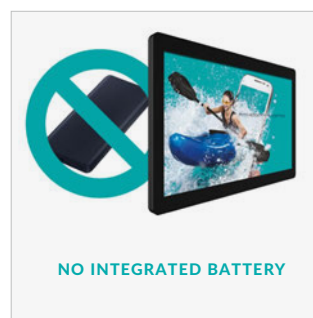
INTEGRATED SPEAKERS



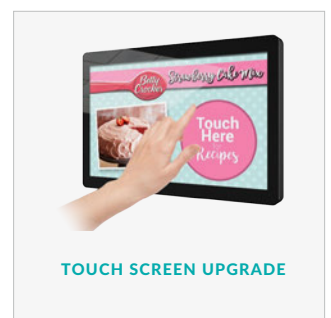
POE



VESA MOUNTING HOLES



NO INTEGRATED BATTERY

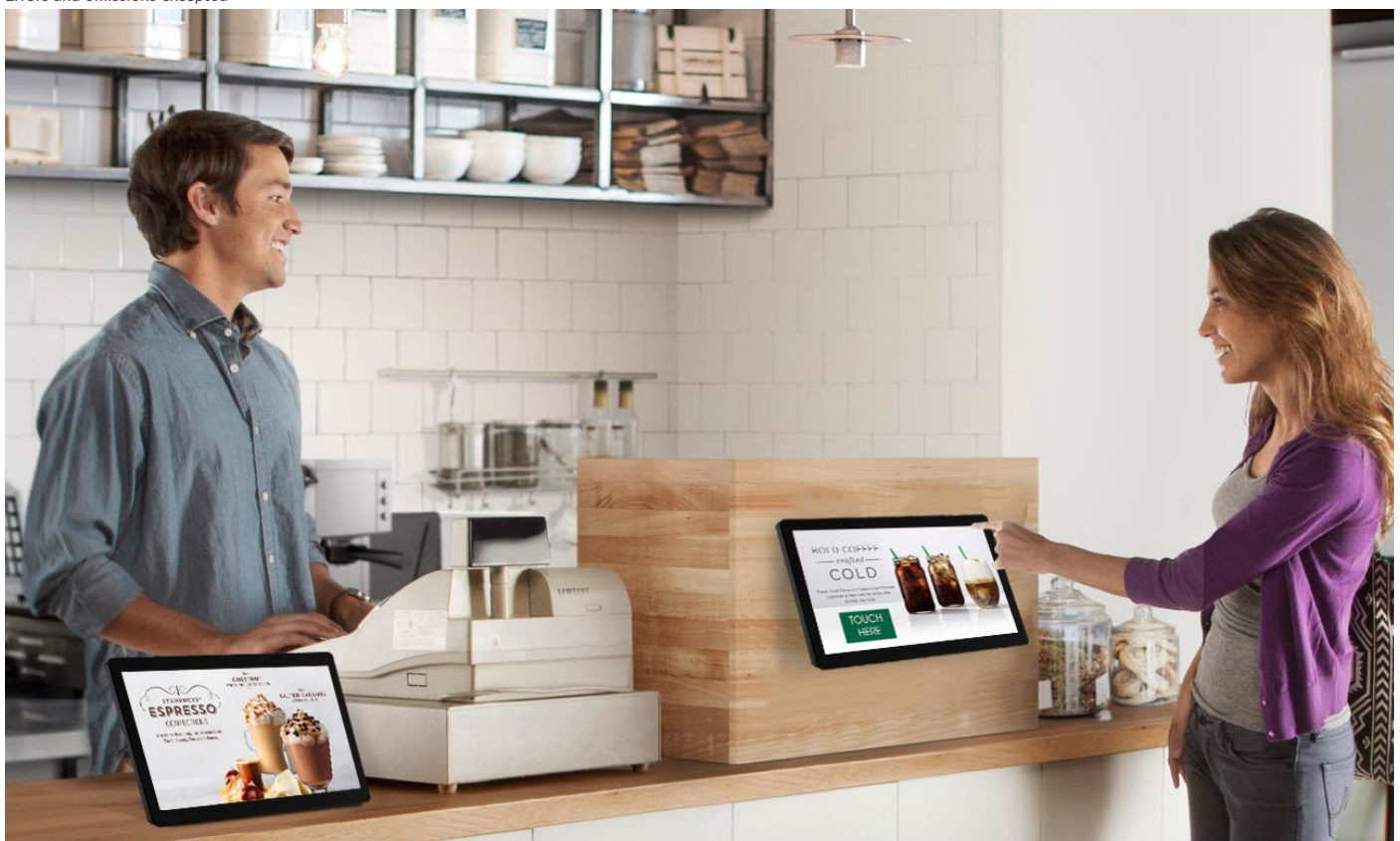


TOUCH SCREEN UPGRADE

Specification Table

		10 Inch
Panel	Resolution	1280x800
	Display Area (mm)	217.95x136.65
	Aspect Ratio	16:10
	Brightness (cd/m ²)	450
	Colour	16.7M
	Colour Depth	10 Bit
	Viewing Angle	178°
	Contrast Ratio	800:1
Audio	Speaker Type	1.5W, 8Ω
Power	Power Consumption (W)	18
	Input Voltage	AC110~240V (50Hz~60Hz)
	PoE Mode	24V Passive
Mechanical	Unit Size (WxHxD mm)	239.9x169.2x26.8
	Package Size (WxHxD mm)	333x278x75
	VESA Holes (mm)	50x50
	Net Weight (kg)	1.5
	Gross Weight (kg)	2.2
Environmental	Operating Temperature	0 °C to 50 °C
	Storage Temperature	-30°C to 60°C
	Operating Humidity	10% to 80%
	Storage Humidity	5% to 95%
Computer	Media Formats	Video (MPG, AVI, MP4, RM, RMVB, TS), Audio (MP3, WMA), Image (JPG, GIF, BMP, PNG)
	Media Resolution	1920x1080/1080x1920
	CPU	Quad-Core Cortex-A7 , up to 1.3GHz (RK3126)
	GPU	ARM Mali-400MP2
	RAM	1GB DDR3
	ROM	6GB NAND
	USB	USB2.0 HOST x1
	Wi-Fi	802.11b/g/n
	OS	Android 5.0.2
	Graphic Engine	OpenGL ES 1.1/2.0
Accessories	Optional	Network Upgrade, PCAP Touch Screen Upgrade, Wall Mount, Table Stand
Warranty	Warranty Period	3 Year Warranty
	Technical Support	Lifetime

Errors and omissions excepted



Technical Drawing

