

Android Network Screens – LAN & Wi-Fi

Quick Start User Manual



Manual Version PFW2.2q

Safety Instructions



- Please keep the display away from any heat sources. Place the display in a stable and well-ventilated place.
- Please handle with care as product contains glass.
- The holes or openings on the display are designed for ventilation. Do not cover or block the ventilation holes or openings with any objects.
- Remove protective covering from the screen before you use the display.
- Shut off the power supply before cleaning. Use a soft lint-free cloth instead of a tissue to wipe the screen.
- You may use a glass cleaner to clean the product as required. However, never spray the cleaner directly onto the display surface.
- Do not attempt to repair this product yourself! Improper disassembly of the product may invalidate the warranty and lead to possible danger
- If you have a problem that cannot be solved using the "Troubleshooting" guidelines, please contact your supplier.

Contents:

1.	Quick Start Guide – LAN Setup	3
2.	Quick Start Guide – Wi-Fi Setup.....	5
3.	Quick Start Guide – Software	10
4.	F.A.Qs and Troubleshooting Guide	18
4.1	How do I play PowerPoint presentations on my display?.....	18
4.2	My media file does not fit properly on the screen	18
4.3	My moving GIF files will not move.....	18

1. Quick Start Guide – LAN Setup

This is a quick start guide for setting up an All-in-One Network Screen on a Local Area Network. First you must set up your hardware.

Once you have mounted/positioned your screen you must connect it to your internet outlet (or router) via an Ethernet cable, then plug into the mains via the power cable.

If your screen is set to LAN mode, and your network does not have any restrictions, it should connect to the cloud server straight away then start to play the demo content.

NOTE: If you have purchased more than one network screen, we recommend that you make a note of the SN code of the screen you are testing first. This can be found on the packaging of the screen, usually handwritten and 8 digits long.



Figure 1 Position of LAN port on wall-mounted unit

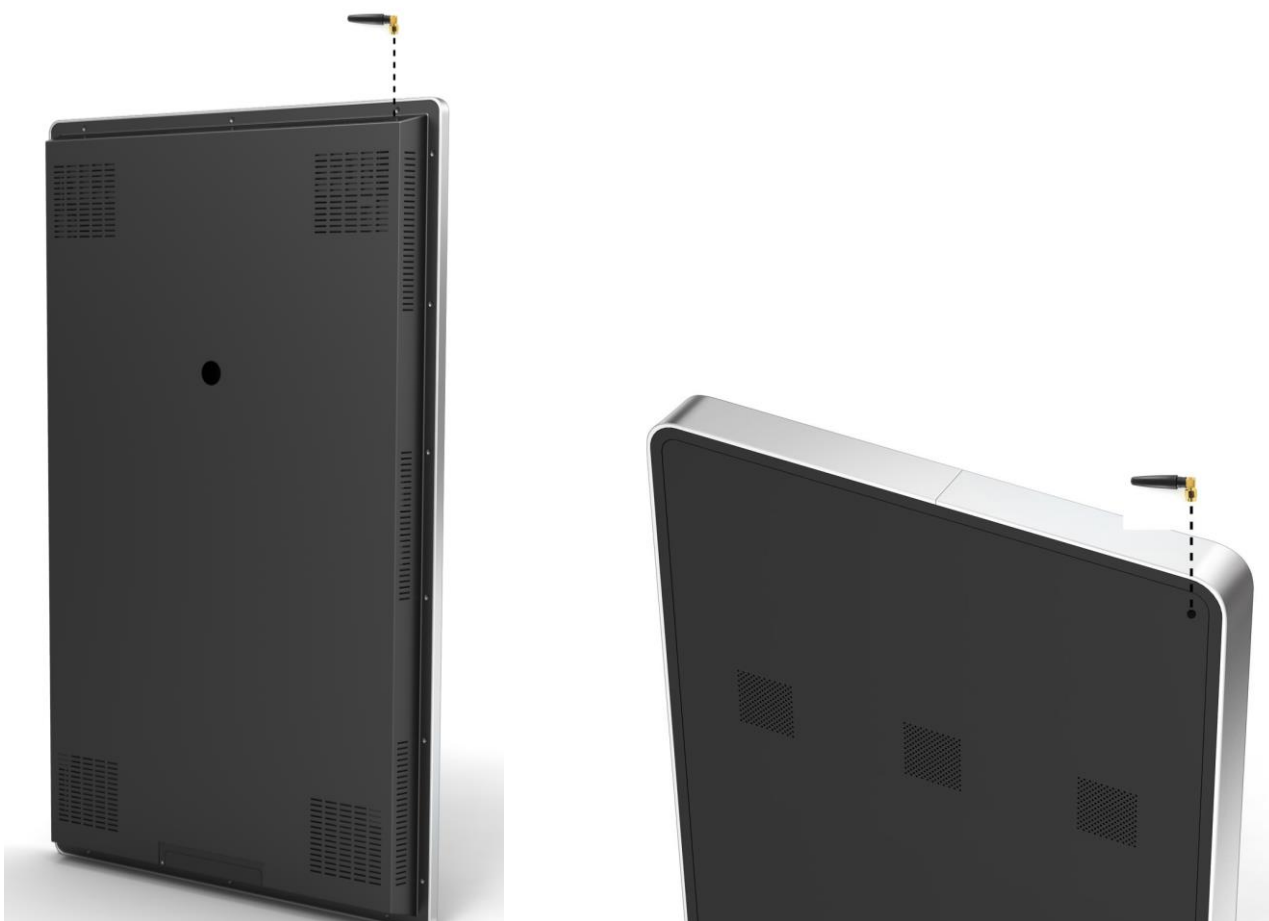


Figure 2 Position of LAN port on a Freestanding unit

2. Quick Start Guide – Wi-Fi Setup

This is a quick start guide for setting up an All-in-One Network Screen on a Wi-Fi network. First you must set up your hardware.

1 of 17. Begin by screwing in your screen’s Wi-Fi aerial.



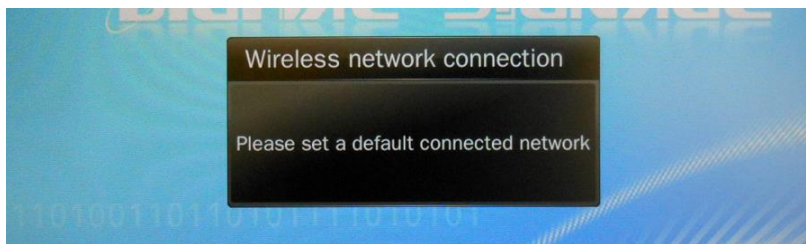
Wall-mounted Unit

Freestanding Unit

2 of 17. You can now mount your screen should you want to or move the screen to the position for Freestanding Screen.

3 of 17. Connect your screen to the mains outlet via the power cable; it should now power up.

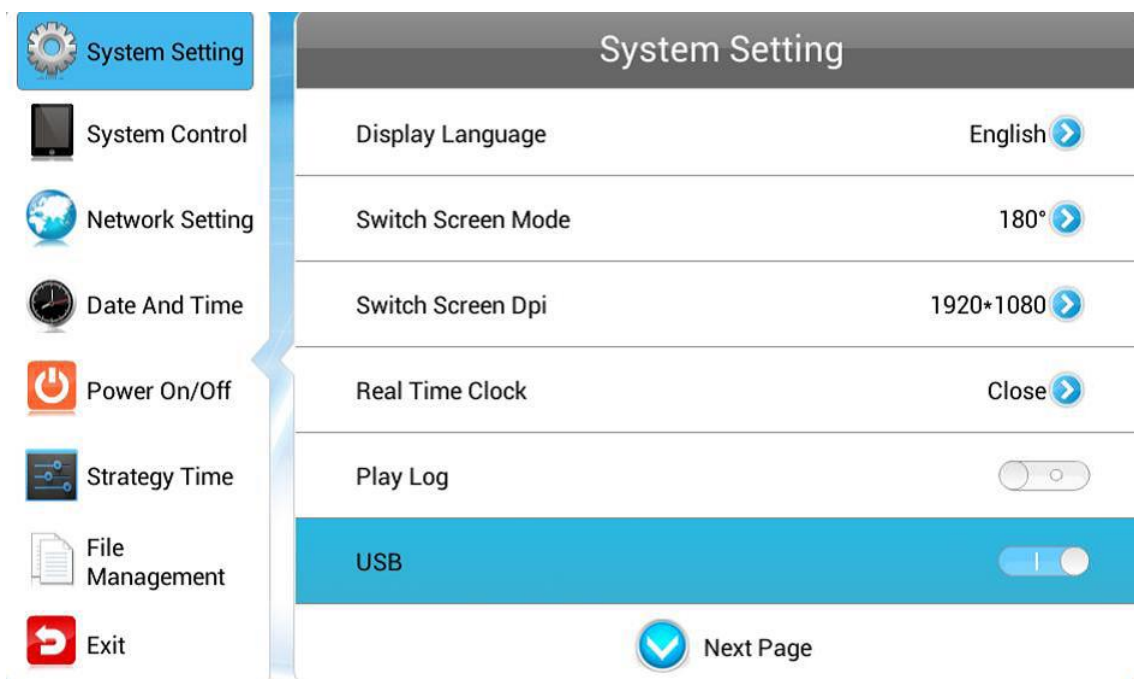
4 of 17. Your screen will automatically attempt to connect to the internet via Wi-Fi and display the following message:



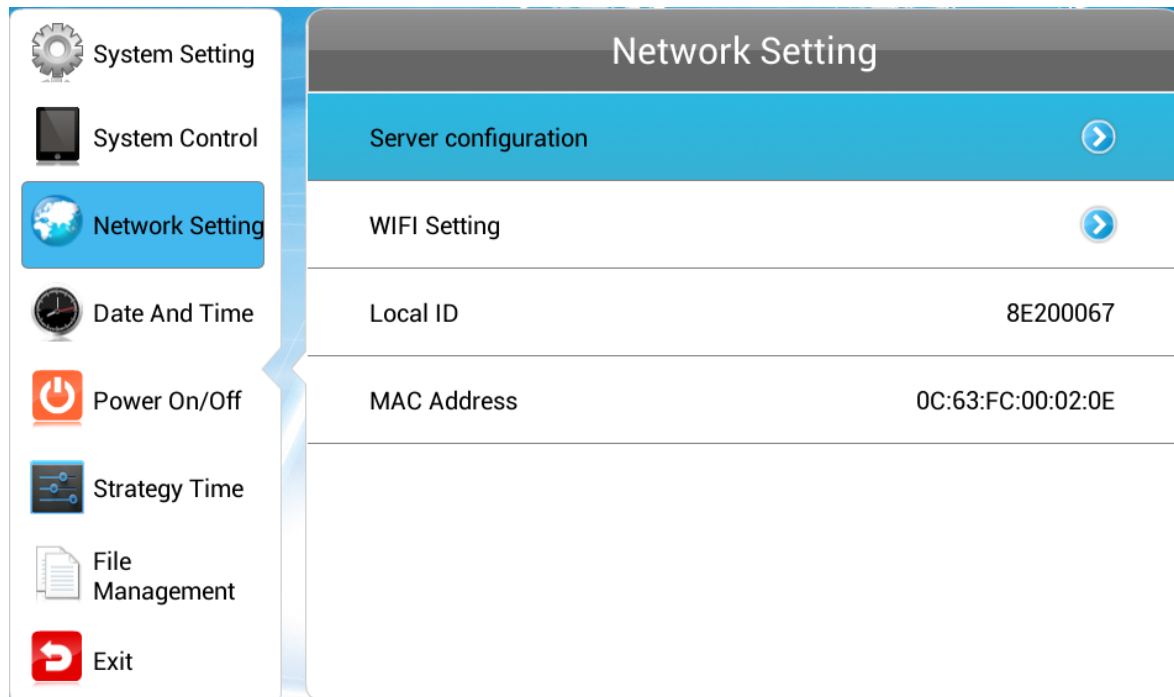
5 of 17. Your Wi-Fi screen will then tell you that the connection has failed and start playing the default demo content.

6 of 17. Press "STOP" on your remote control.

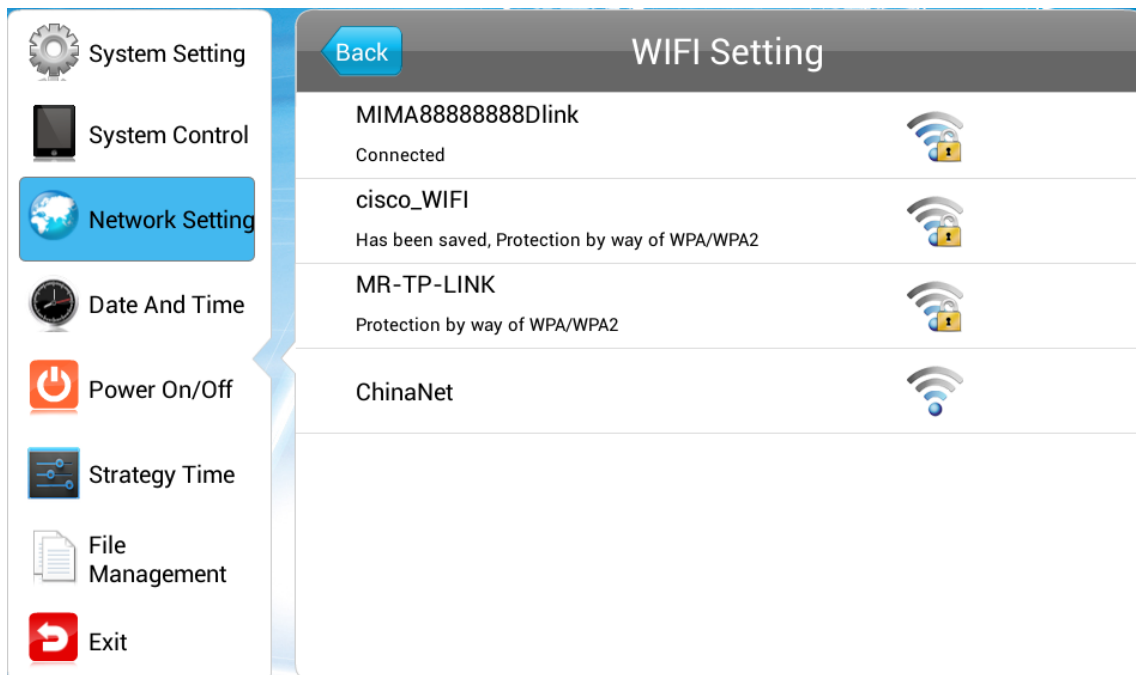
7 of 17. Now press "SETUP" to access the main menu



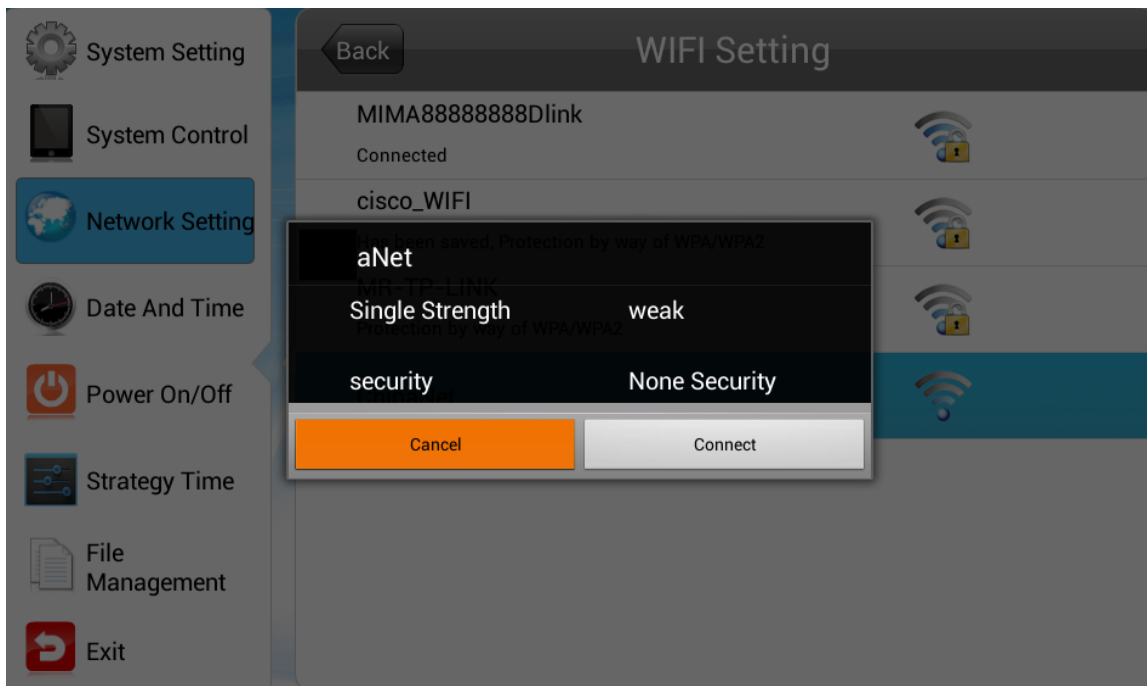
8 of 17. Then navigate to "Network Settings" and press "▶"



9 of 17. Next, using the remote control, navigate to “WIFI Settings” and select by pressing “▶”.



10 of 17. You should now see a list of Wi-Fi networks. Navigate to yours and press “PLAY”. This will then prompt you to input your password (if required) using the on screen keyboard. Once you have entered your password highlight and select “back” from the on screen keyboard. Then highlight and select “Connect”.



11 of 17. The connection status under the network name should now change from

“Connecting...” to “Has connected”.

12 of 17. Finally, navigate to “Back” and press “PLAY”. This will bring you back to the “Network Settings” menu. Press ‘◀’ to go back to main menu then navigate to “Exit” and press “PLAY”. The system will ask to if you want to reboot the screen so that the changes can take effect, select “YES”.

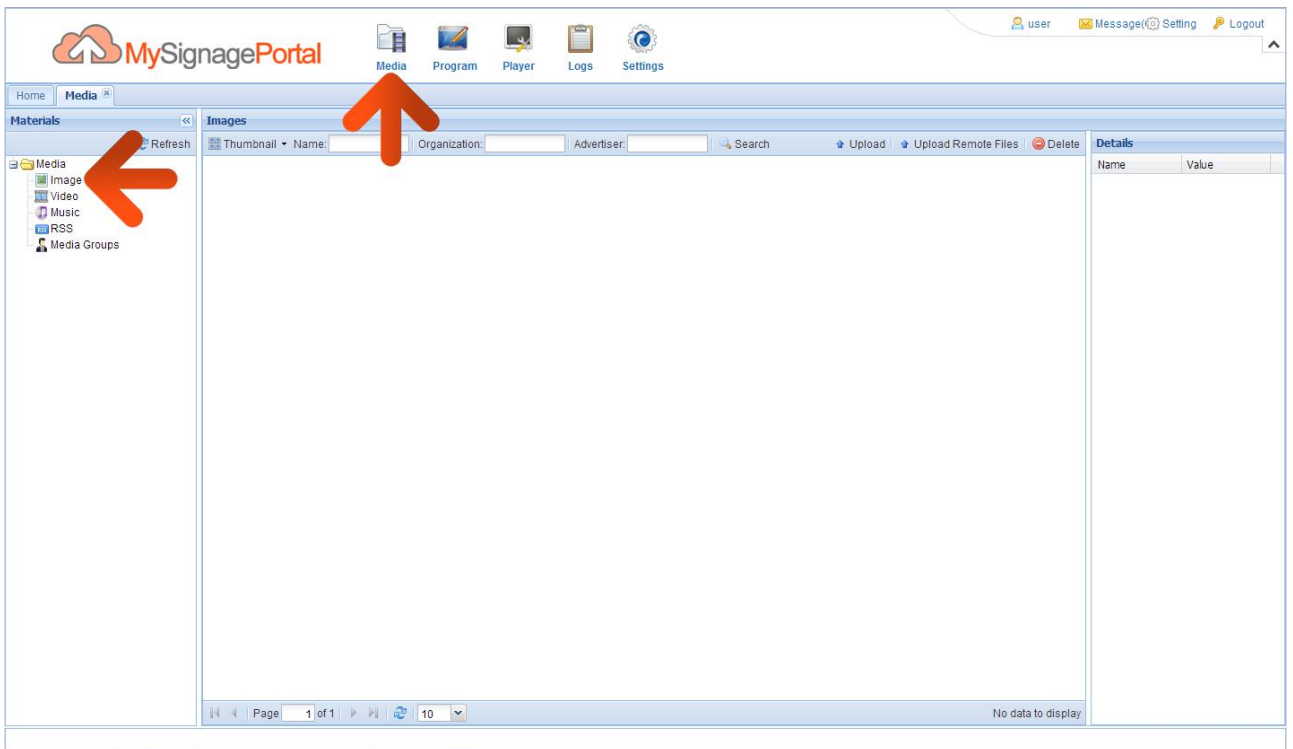
13 of 17. Your screen is now ready to be updated via the CMS software. The default demo content will continue to play until you update your screen.

3. Quick Start Guide – Software

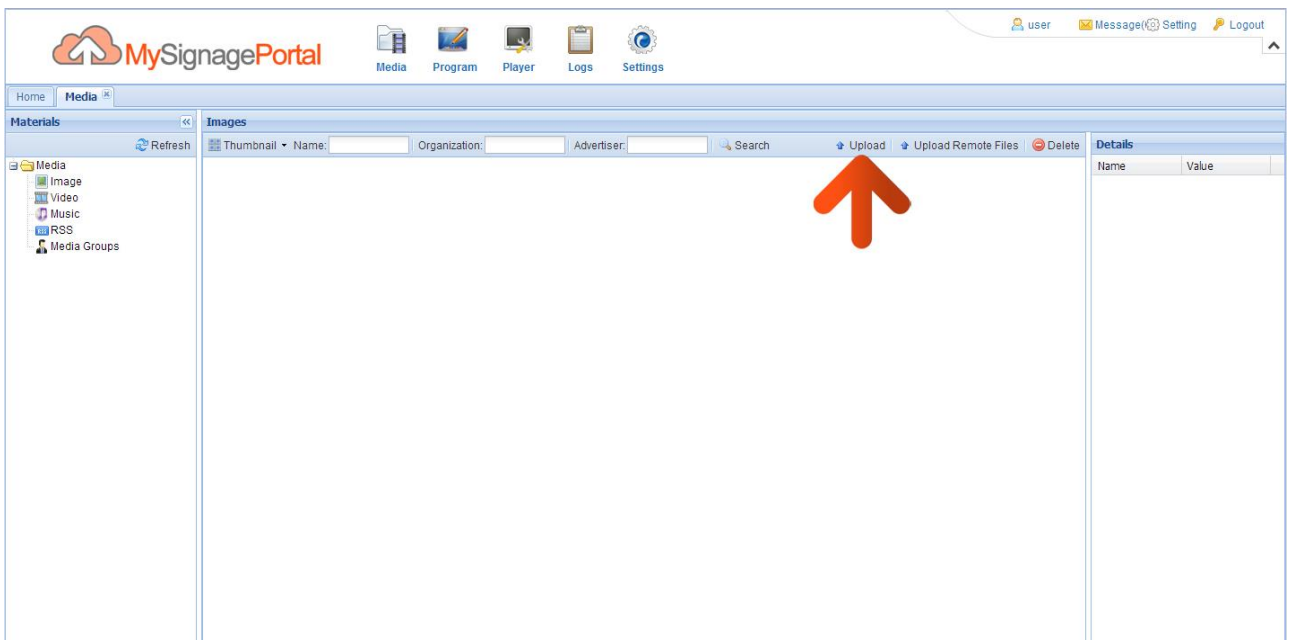
1 of 15. Begin by launching a web browser, we recommend Google Chrome however most popular browser should be compatible, then go to www.mysignageportal.com and click “Login” from the top navigation menu. Next, enter the username and password that you were provided with when you received your screen along with the security code.



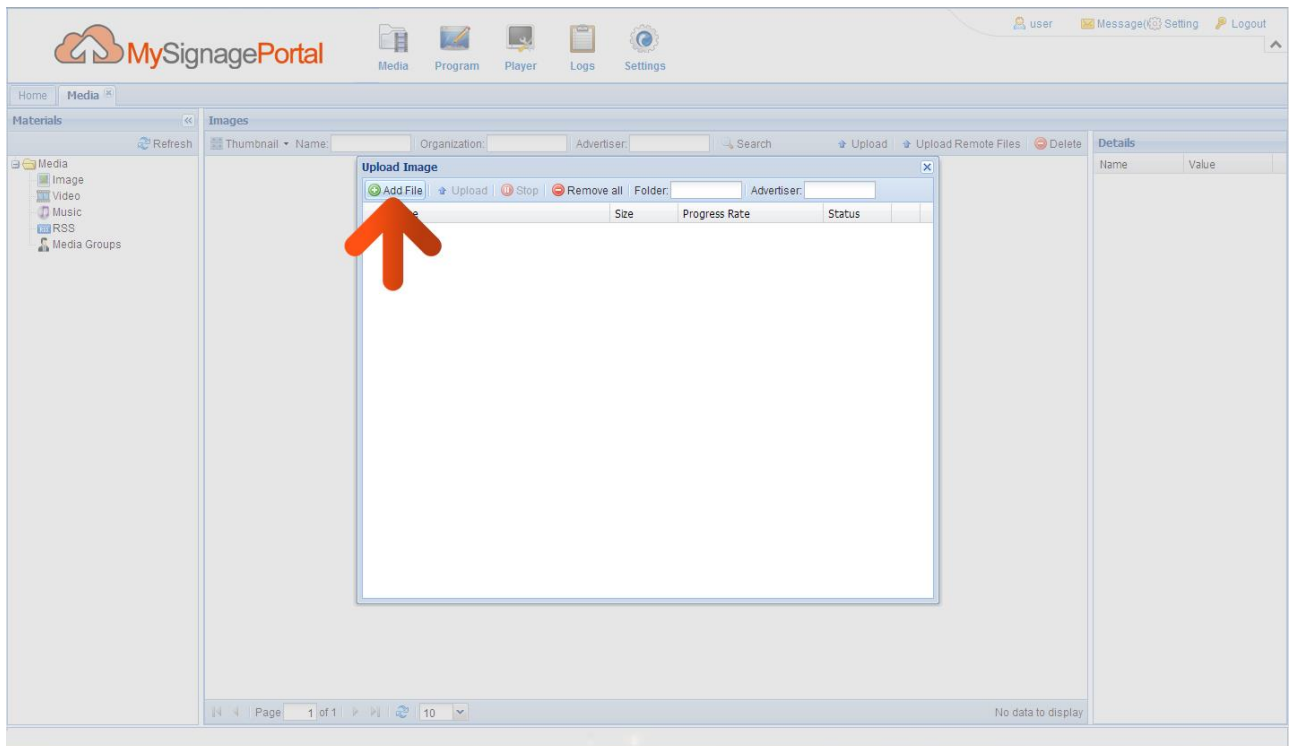
2 of 15. Once you have successfully logged in, upload two JPEG images. Begin by clicking on the “Media” icon on the Top Menu then click on “Image”.



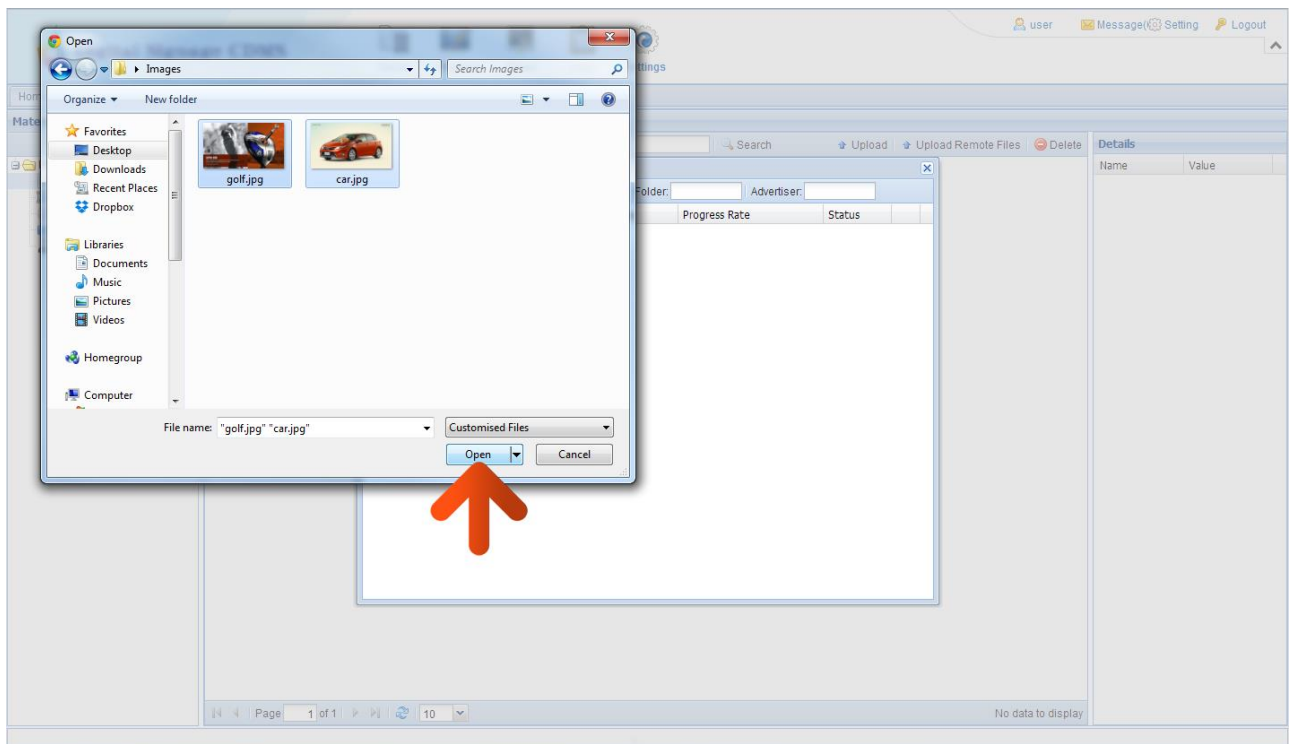
3 of 15. Then click on the “Upload” button.



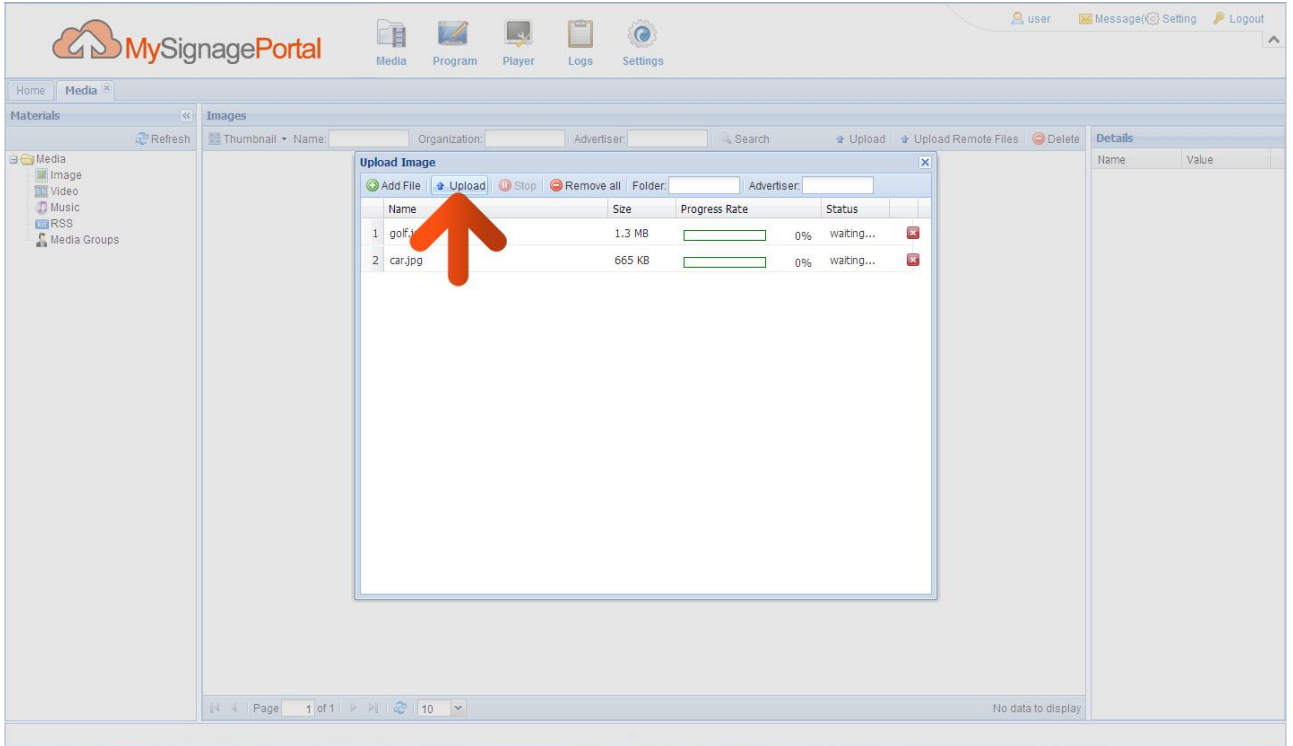
4 of 15. The Upload Image window will now appear. To begin uploading files please click the “Add Files” button.



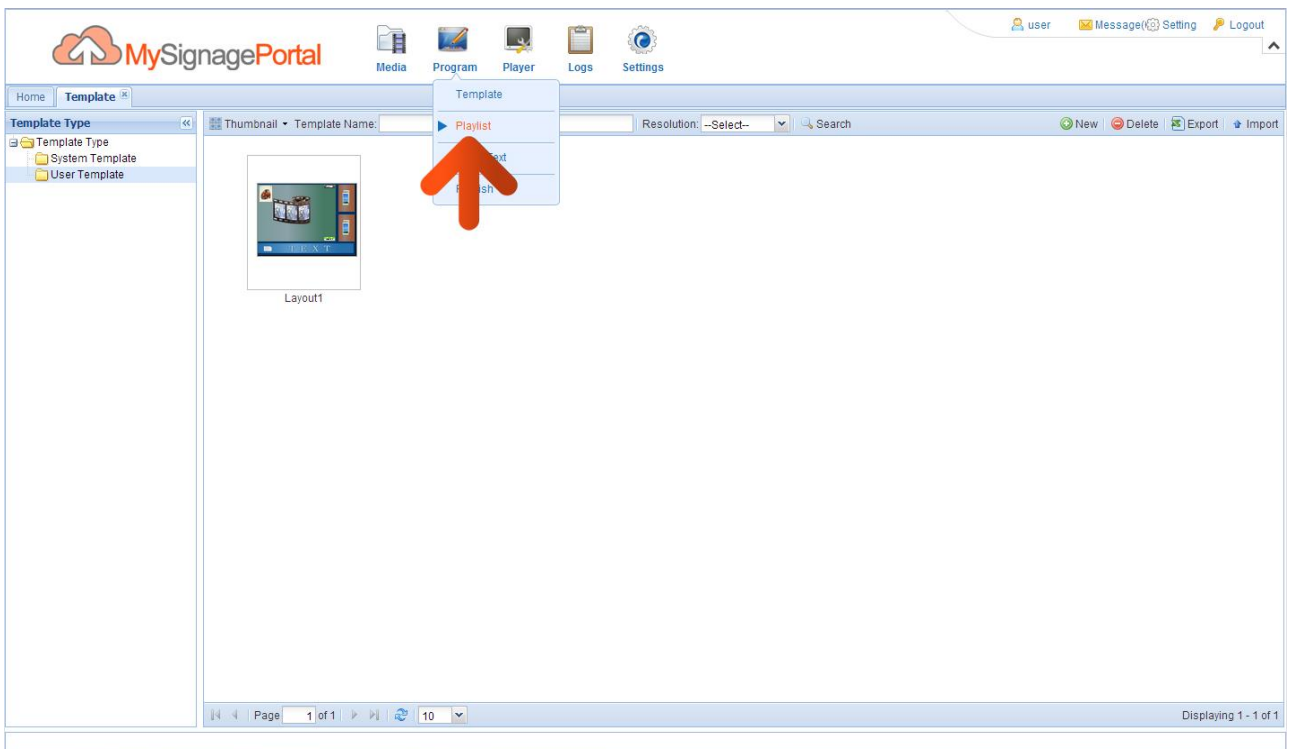
5 of 15. You can now browse through your files and select the JPEG images you wish to upload. Once you have selected the image files you wish to upload click “Open” in the browser window.



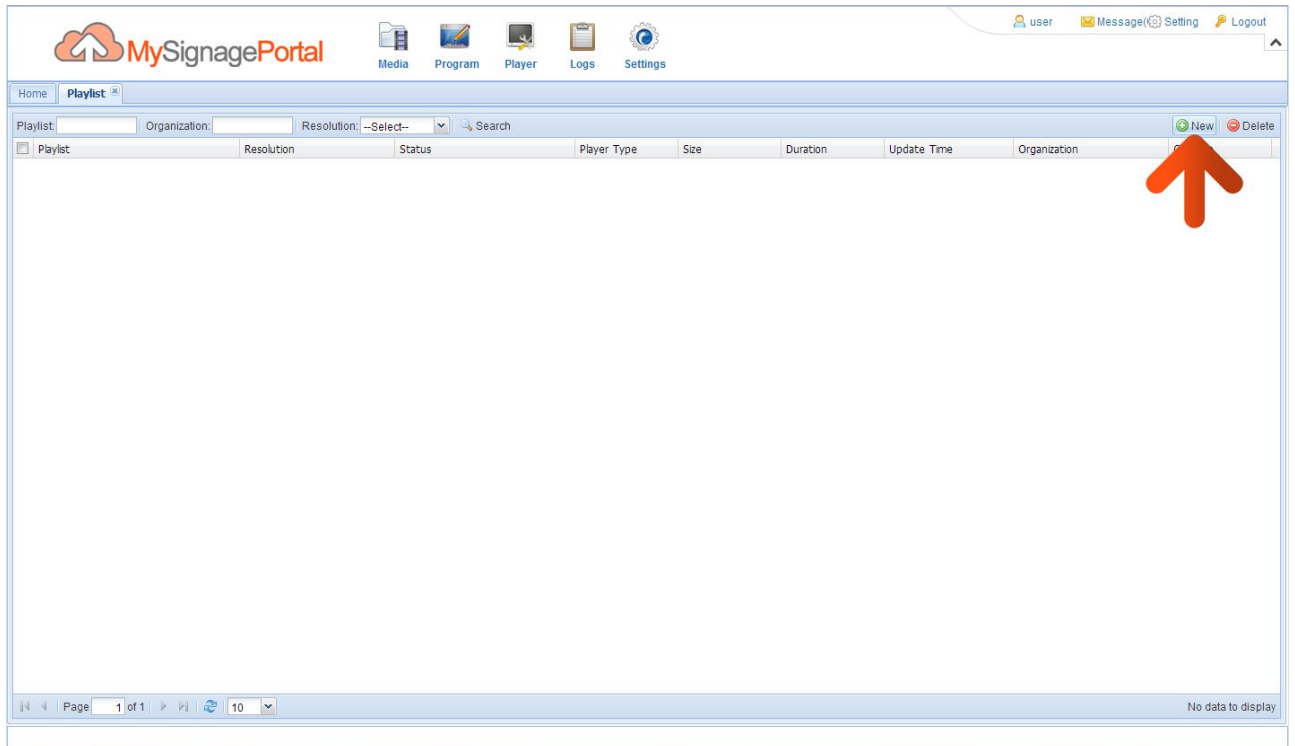
6 of 15. You will now have a list of all the images you selected to upload. Click the “Upload” button and wait until they have all finished uploading. You can track the progress of each file by the loading bar underneath the file name.



7 of 15. Once your images have uploaded, hover over the “Program” icon on the Top Menu then click on “Playlist”.

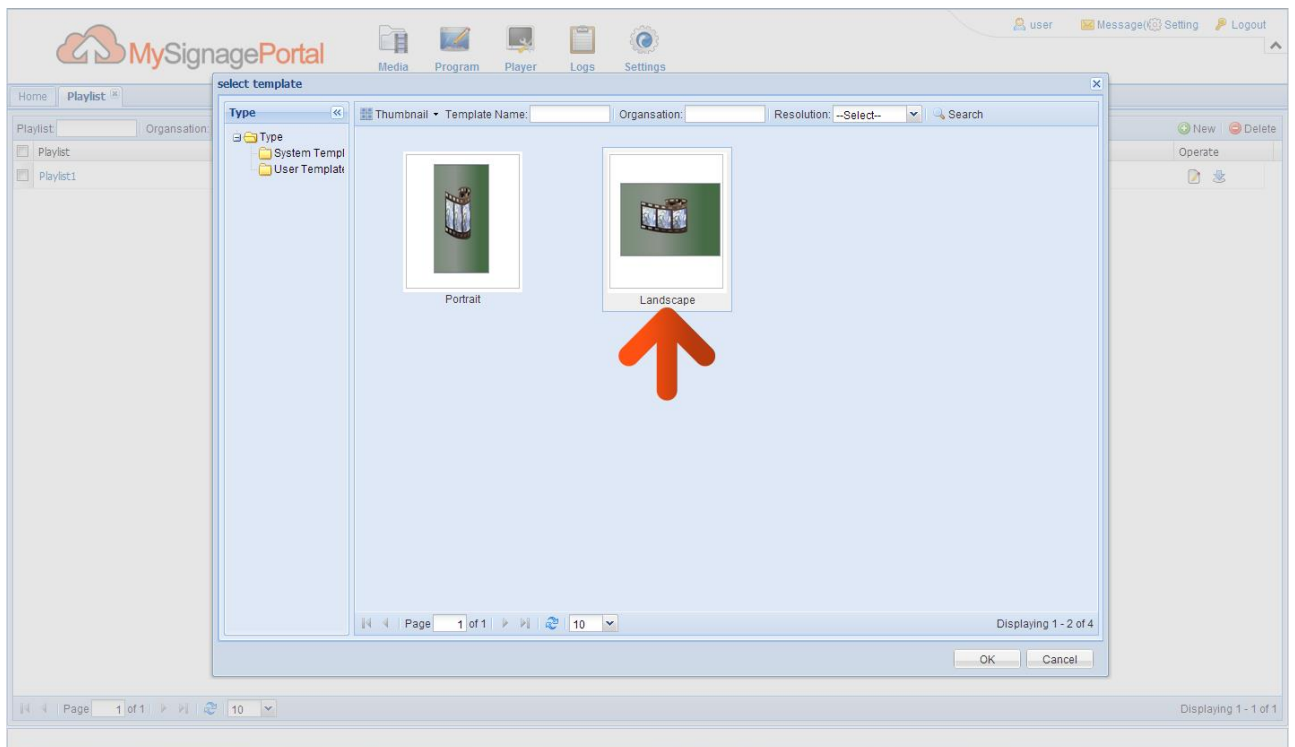


8 of 15. Click the “New” button.

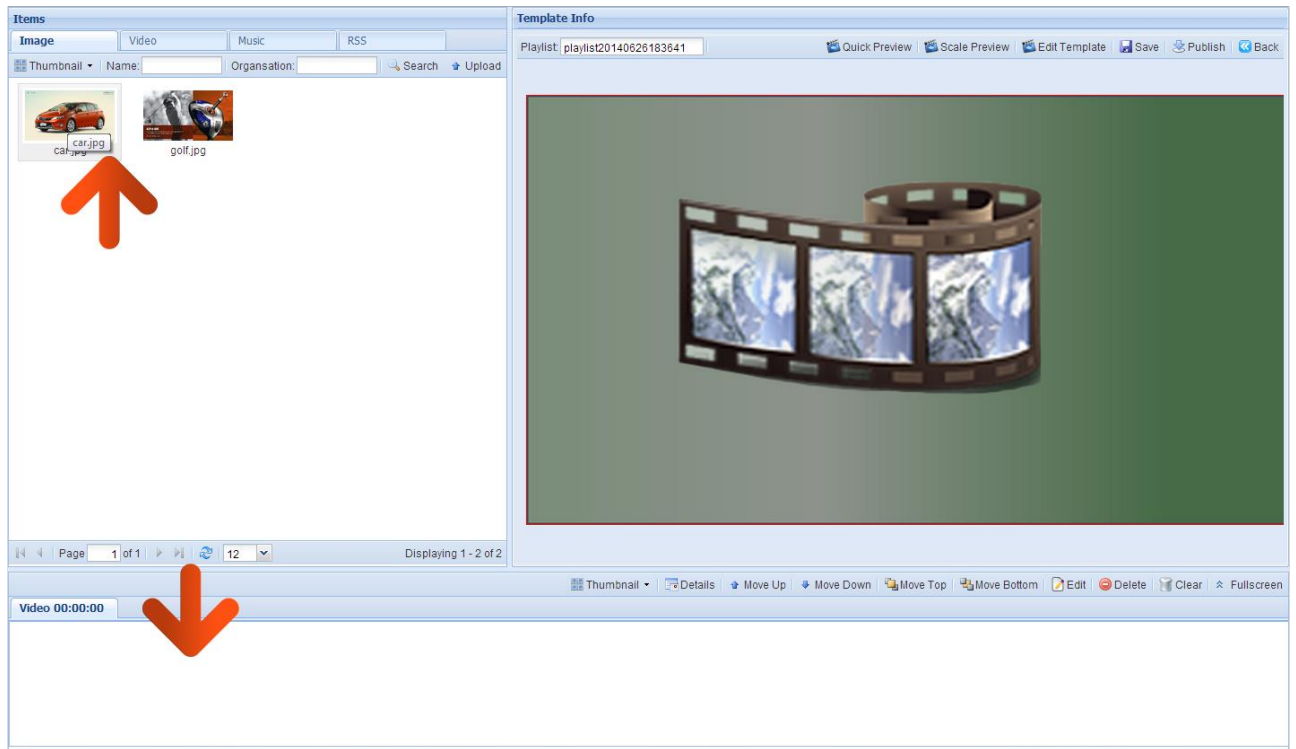


9 of 15. You then have to select a Template. This will bring up a grid of your pre-developed templates; select the one with a plain layout called “Horizontal” and click “OK”.

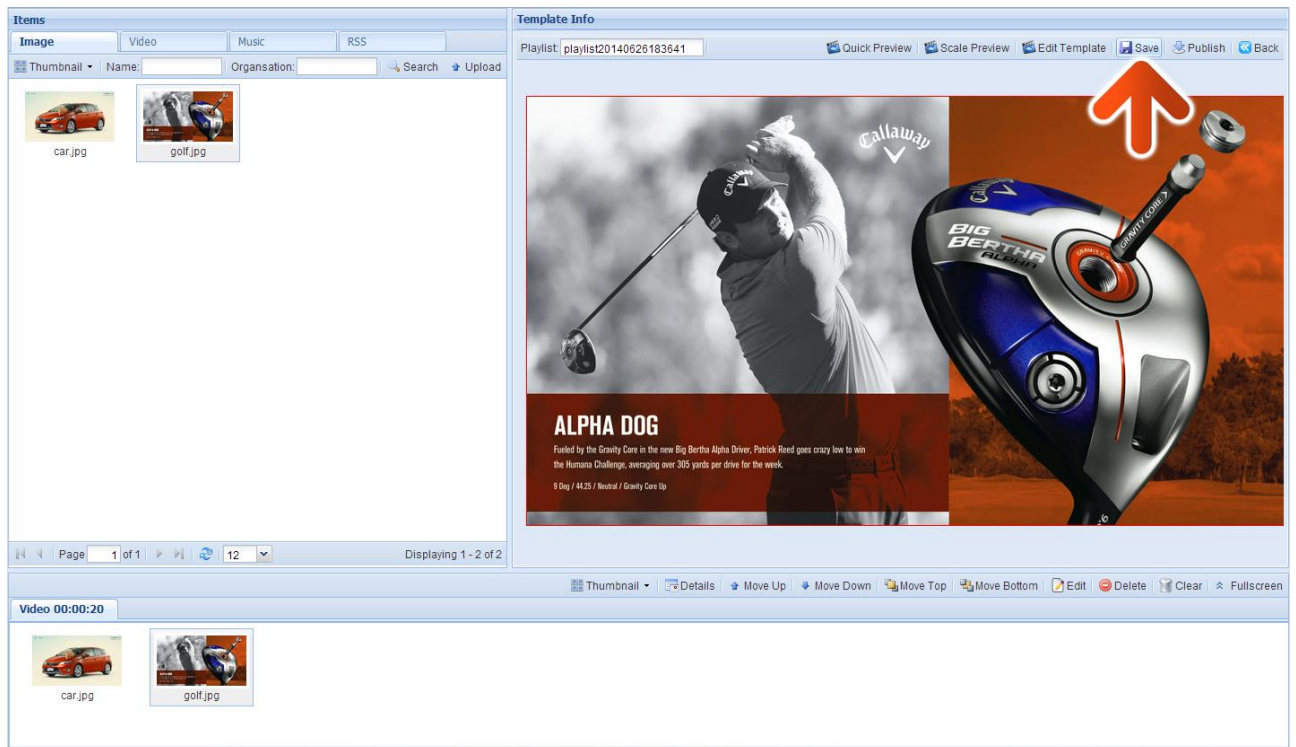
NOTE: If your screen’s “Screen Mode” has been changed to Vertical orientation you must select the “Vertical” template.



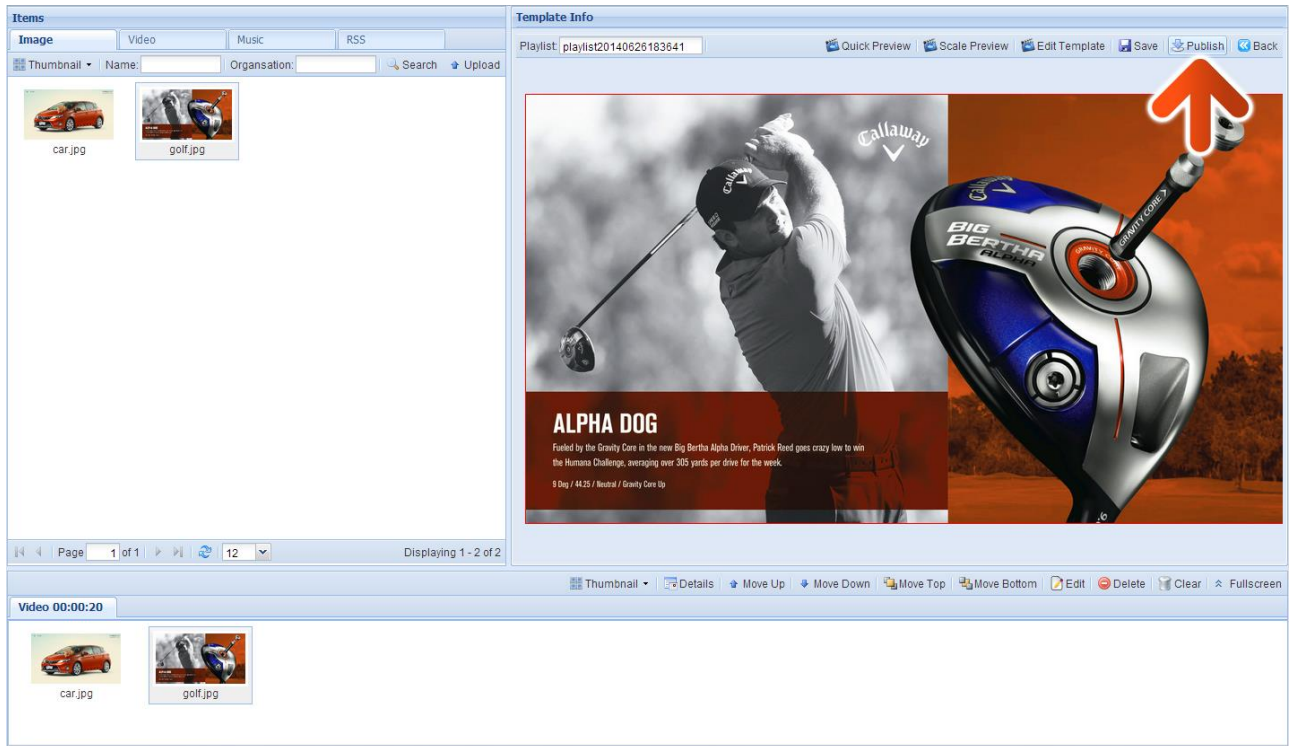
10 of 15. Drag and drop the images that you have uploaded into the bottom section.



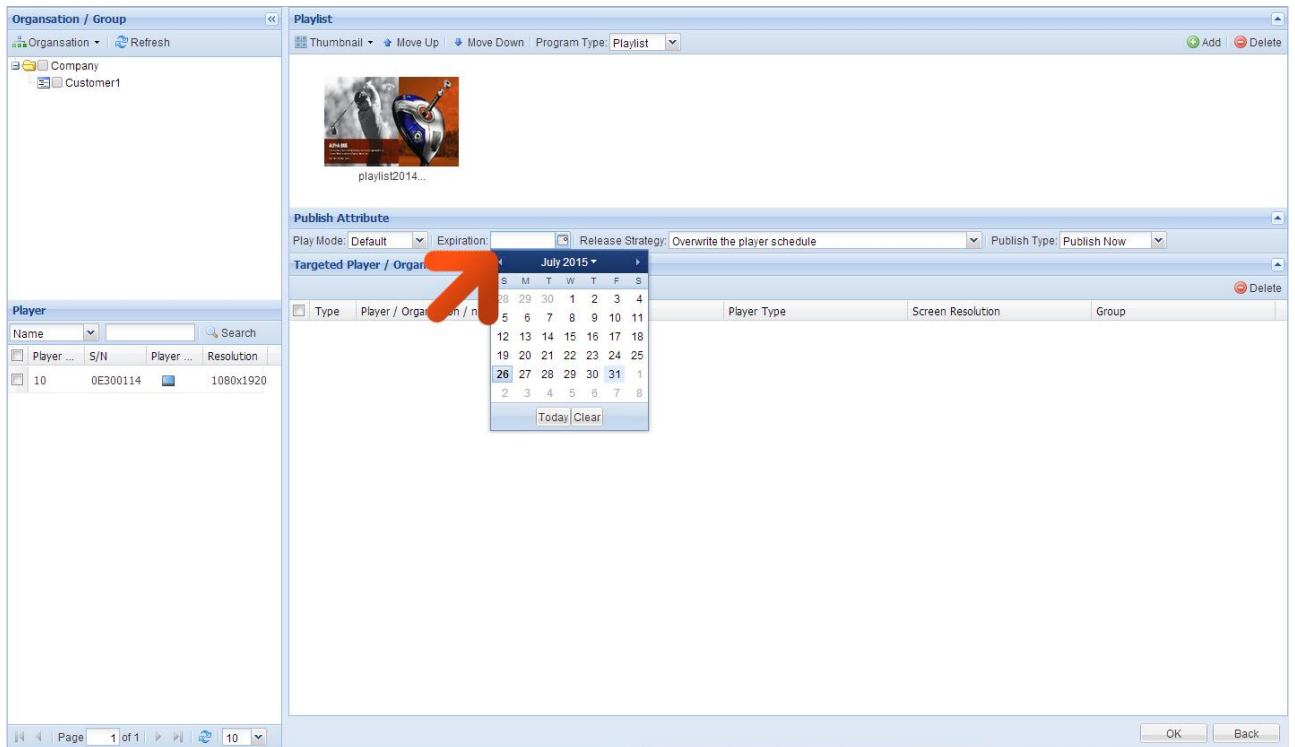
11 of 15. You will now see a list of the image files that this zone contains. Next, click "Save".



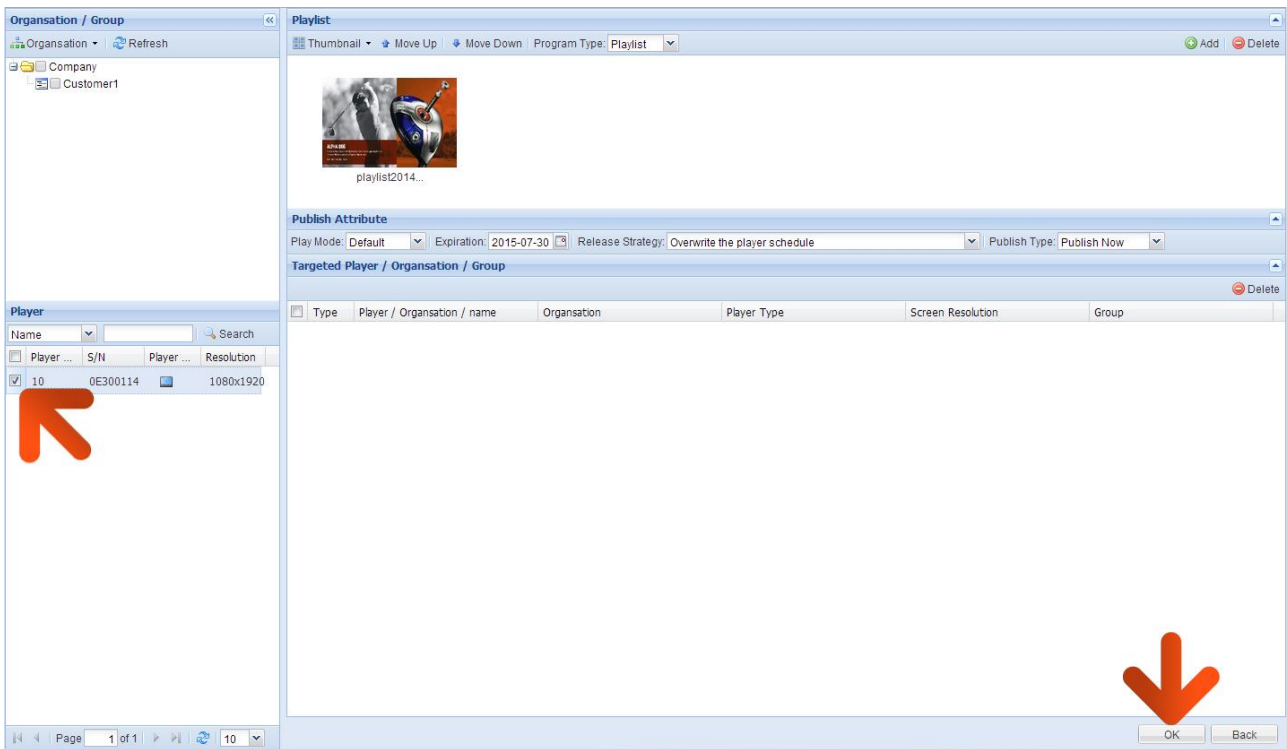
12 of 15. Then, click “Publish”.



13 of 15. Click the “Expiration” field and set an expiration date of at least one year on from the current date just in case you want to refer back to this playlist in the future.



14 of 15. Finally add the screens that you would like to Publish the Playlist to by clicking the checkbox next to the name of the screen. Then Click "OK".



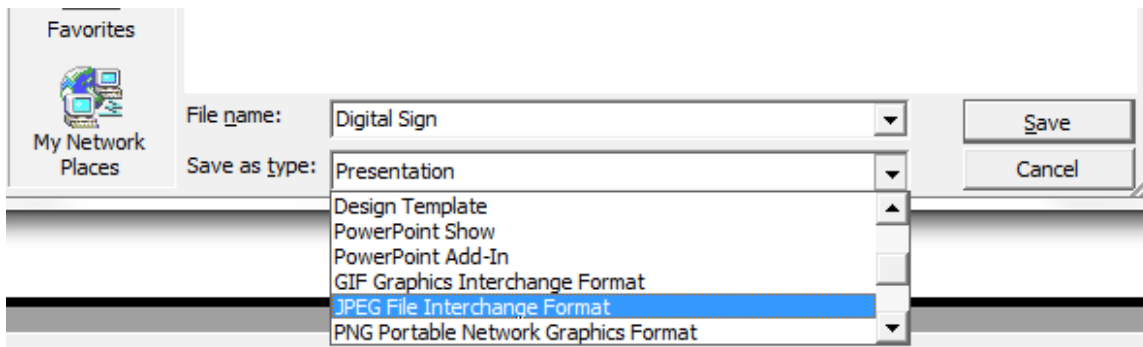
15 of 15. Check your screen; the two images should now be playing in a loop.

4. F.A.Qs and Troubleshooting Guide

4.1 How do I play PowerPoint presentations on my display?

You can save the PowerPoint presentation as a JPEG File Interchange Format (.JPG). Microsoft PowerPoint software allows the user to do this

- 1) Create or open a PowerPoint presentation.
- 2) Click File > Save As
- 3) Enter a File name
- 4) Click on “Save as type” scroll down and find the file extension “JPEG file interchange format”, as shown in the image below.



- 5) Click Save.
- 6) A message will appear asking if you would like to save all slides as JPEG's
- 7) Once you have selected your option, The JPEG images will be saved and are ready to use within a playlist or to upload to a storage device.

NOTE: For the best portrait resolution, you can use this PowerPoint Page Setup: Width 42.6cm; Height 24cm (16:9 Ratio)

4.2 My media file does not fit properly on the screen

This has happened because the file does not have a 16:9 aspect ratio (1920x1080). Please resize file to 1920x1080 pixels and try uploading the media onto the display once again.

4.3 My moving GIF files will not move.

As the screen recognises any .gif file as an image it will display the first frame of a moving gif for the allocated image display time.