



10" POS Android PCAP Touch Screen

# Overview

## Integrated Android Media Player

The integrated Android Media Player allows for super fast updates. If required you can also run third party Digital Signage software via the Android PC board.



## Commercial Grade Tablet

Designed for use in commercial applications this screen can run 24/7. Strengthened glass front and no external buttons or controls to avoid tampering.

## Built in Wi-Fi

Connect the screen to the CMS wirelessly via the integrated Wi-Fi, ethernet or by LAN

## 10-Point PCAP Touch Technology

Using the most responsive and sensitive commercial touch technology available. Not affected by dust or debris on the screen surface.

## Plug and Play

Plug and Play is the easiest and most simple way to upload content to the screen. Simply load images and videos on a USB stick, insert in the display. Wait for your content to copy over and then remove. Your images and videos will now play in a continuous loop

## LED Backlight

Improves brightness and contrast as well as improving their lifespan and reducing their power consumption. Unlike other forms of light this technology is mercury free; making it even more eco-friendly. The panel and backlight have a lifespan in excess of 70,000 hours.

## Portrait/Landscape Orientation

The screen can be used in either a landscape or portrait orientation depending on your requirement.

## Integrated Mounting Solution

The rear of the display includes an integrated and secure screw based mounting solution.



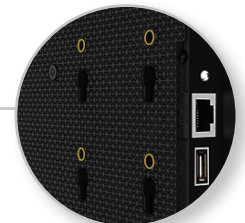
## Power Over Ethernet

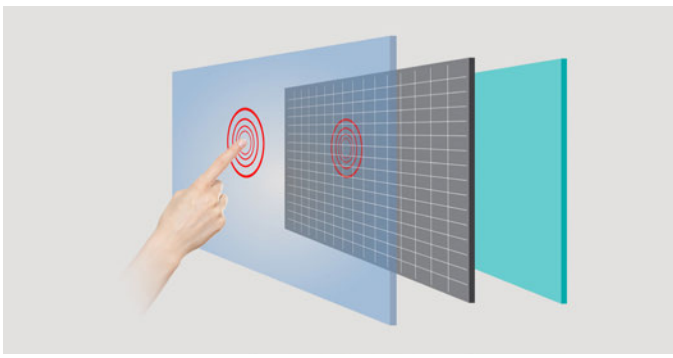
Power the screen using an Ethernet cable or the power cable provided.



## RS-232 Control

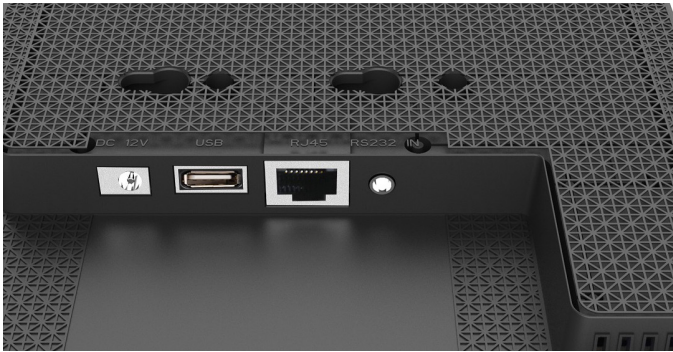
Control, scale and customise your display over long and short distances using RS-232,





## PCAP Touch Screen

State of the art Projected Capacitive interactive technology offers the most responsive and sensitive touch experience available. Designed for commercial applications, PCAP touch technology works by fixing a sensor grid between a layer of cover glass and the LCD panel, when a finger touches the glass the grid detects the coordinates of the touch point. Unlike other touch technologies PCAP is not affected by dust or debris on the screen surface, allows for up to 10 touch points and offers superior optical quality.



## Power over Ethernet

Your screen can either be powered using the power cable provided or by using an Ethernet cable. This makes the display extremely flexible, allowing you to supply power to the screen using the more convenient of the two methods.



## RS-232 Control

Once your screen is connected via RS-232 you can control, scale and customise your display remotely over short and long distances.



## Commercial Tablet

Ideal for use in commercial applications these touch screens bring in a whole new level of audience engagement to your marketing campaigns. Unlike domestic touch tablets these screens can be in continuous use, thanks to their screwless design and enclosure made from light weight polymer these screens are ideal for shelf edge and POS displays. The screen comes with an integrated Android media player that means you can display content without the need for a dedicated PC.





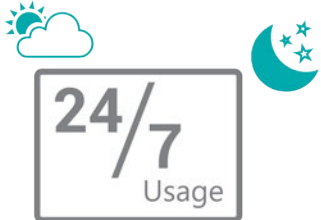
## Features

### 10 Point Touch



Having up to 10 touch points allows for a wider variety of applications than ever before. This kind of functionality allows you to manipulate images, zoom in and out as well as perform many other touch gestures; much like you would with a domestic tablet. It also allows for multiple users interacting with the screen at one time.

### 24/7 Usage



Built with commercial grade panel and components these displays are designed to run 24/7 in constant use; unlike domestic tablets. The panel also has a lifespan of over 70,000 hours of continuous use. They can also be used in landscape or portrait orientation.

### Power Timer



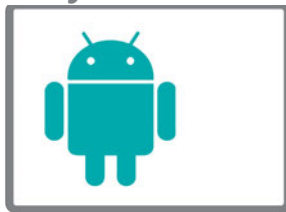
This allows for reduced power usage by automatically powering off in hours that the displays are not required. You can set daily On/Off times for your displays.

### LED Backlight



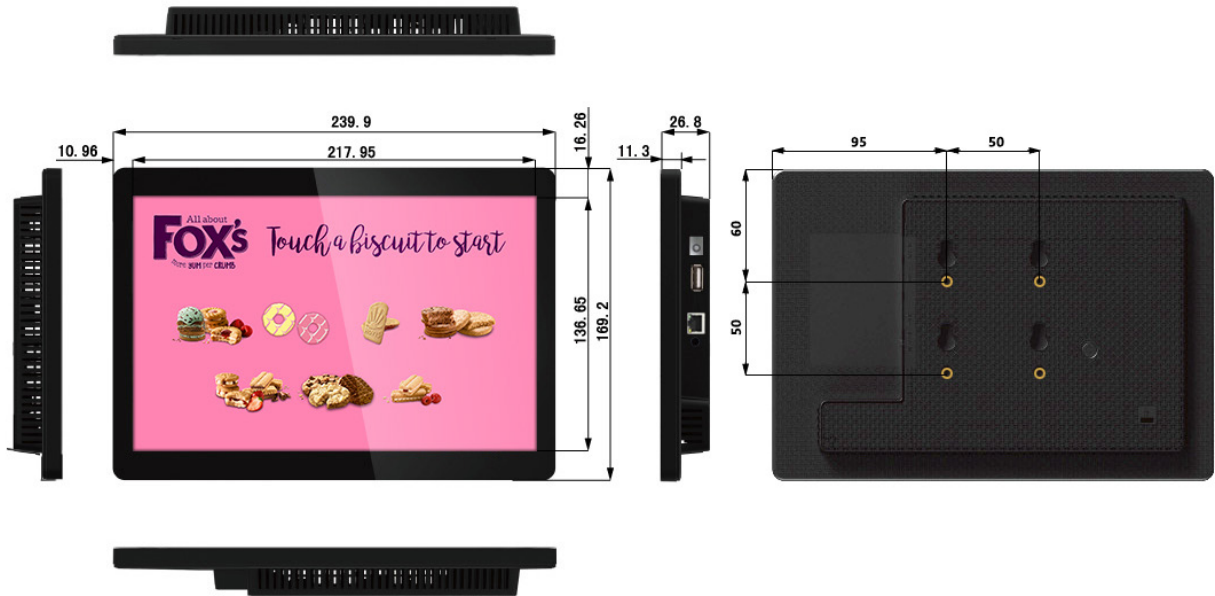
The LED backlight used is not only eco-friendly but also ensures the display has enhanced brightness and contrast. This technology increases the lifespan and reduces the power consumption by around 30%. This form of light technology is mercury free; safeguarding this screen's eco friendliness.

### Android Media Player



Their integrated Android network media player provides super-fast processing speed for improved communication with the CMS. It also allows you to display live websites; this can be anything from a live web feed from a third party to your social media page. Should you need to you can also run your own software if you already have a CMS solution.

## Technical Drawing:



<b>Panel</b>	Display Size	10 inch	
	Resolution	1280x800	
	Display Area (mm)	217.95x136.65	
	Aspect Ratio	16:10	
	Brightness (cd/m <sup>2</sup> )	450	
	Colour	16.7M	
	Colour Depth	10 Bit	
	Viewing Angle	178°	
Contrast Ratio	800:1		
<b>Touch</b>	Touch Technology	Projected Capacitive	
	Touch Points	10	
	Glass Hardness	7H minimum	
<b>Audio</b>	Speaker Type	1.5W, 8Ω	
<b>Power</b>	Power Consumption (W)	18	
	Input Voltage	AC110~240V (50Hz~60Hz)	
	PoE Mode	24V Passive	
<b>Mechanical</b>	Unit Size (WxHxD mm)	239.9x169.2x26.8	
	VESA Holes (mm)	50x50	
	Package Size (WxHxD mm)	333x278x75	
	Net Weight (kg)	1.5	
	Gross Weight (kg)	2.2	
	Working Temperature	0 °C to 50 °C	
<b>Feature</b>	Internal Media Player	Media Formats	Video (MPG, AVI, MP4, RM, RMVB, TS), Audio (MP3, WMA), Image (JPG, GIF, BMP, PNG)
		Media Resolution	1920x1080/1080x1920
		Internal Memory	6GB
		CPU	Quad-Core Cortex-A7 , up to 1.3GHz (RK3126)
		GPU	ARM Mali-400MP2
		RAM	1GB DDR3
		ROM	6GB NAND
		USB	USB2.0 HOST x1
		Wi-Fi	802.11b/g/n
		OS	Android 5.0.2
Graphic Engine	OpenGL ES 1.1/2.0		
<b>Accessories</b>	Optional	Cloud Network Software	