

Freestanding Infrared Multi Touch Screen Display (Dual OS)

User's Manual



Manual Version LHD6-T1.0

Safety Instructions



- Please keep the display away from any heat sources such as electric radiators or direct sunlight. Place the display in a stable and well-ventilated place.
- Please handle with care so as to not damage the LCD panel.
- The holes or openings on the display are designed for ventilation. Do not cover or block the ventilation holes or openings with any objects.
- Remove protective covering from the screen before you use the display.
- As the display surface is vulnerable to scratches, avoid touching the surface with sharp pen point.
- Shut off the power supply before cleaning. Use a soft lint-free cloth instead of a tissue to wipe the screen.
- You may use a glass cleaner to clean the product as required. However, never spray the cleaner directly onto the display surface.
- Do not attempt to repair this product yourself! Improperly disassembly of the product may invalidate the warranty and lead to possible danger!

Quick Start Guide (switching between Windows & Android)

When you turn your screen on for the first time you will see an option screen allowing you to choose which operating system you would like to run; Android or Windows. This page will appear each time the screen is restarted.

Windows to Android:

Once you have launched the Windows operating system you will see an icon on the desktop called "WinToAnd" that looks like this:



WinToAnd

Launch this program and when the "User Account Control" box appears select "Yes". Next click the "Switch to Android" button, you will then be asked to confirm your selection, click "Yes". Finally, you will be greeted by a "Set Variable Success" box, click "OK".

The screen will now shut down Windows and launch the Android operating system. Please allow a few minutes for this to occur.

Android to Windows:

Once you have launched the Android operating system you will see an icon on the apps list called "Boot to Windows" that looks like this:



Boot to Windows

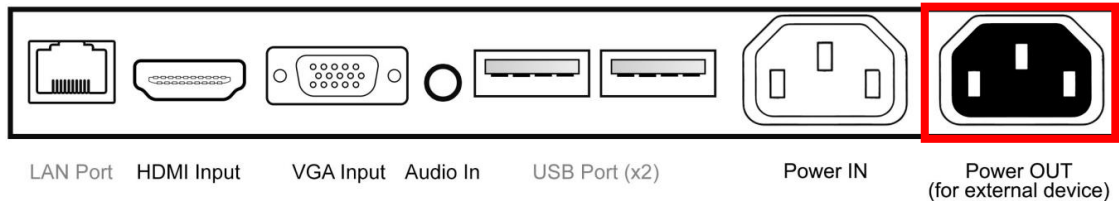
Launch this app and the screen will shut down Android system and launch the Windows operating system. Please allow a few minutes for this to occur.

Quick Start Guide (connecting to an external PC/Media Player)

This section of the guide is to allow rapid set up and use of the unit. Please refer to the main part of the User Guide for full information on use of the unit.

Please follow the steps detailed below:

1. Insert the female end of the C14 to C6/C13 Y Power Splitter into the female power OUT socket inside the locker door:



2. Connect your PC to the male end of this splitter; either via the C6 or C13 connection (please ensure you have a mouse connected to your PC).
3. Connect the screen to the PC via the USB cable hanging from the left hand side of the inputs.
4. Connect the screen to the PC via the HDMI cable provided:



5. Plug the screens power cable into the mains which should power on both the screen and the PC.
6. Access the display options from your Control Panel or right-click on your Desktop and choose "Screen resolution".
7. Select the "Orientation" dropdown menu then click on "Portrait (flipped)".
8. Click "OK" and your screen contents and operations will now be rotated 90° clockwise.
9. You may be asked "Do you want to keep these display settings?" click on "Keep changes".
10. The screen should now be acting as a monitor and allowing you to use your finger as a mouse on the screen displaying the PC's contents.
11. If the screen does not display the signal from the PC then connect press the "SOURCE" button on the remote control and navigate to "HDMI" and press "PLAY".

Contents:

1.	Introduction	6
1.1	Box Contents	6
1.2	Product Overview	6
1.3	Remote Control	7
1.4	Replacing the Remote Control Battery	8
2.	Menu Operation	9
2.1	Inputs	13
2.2	Switching between Android and Windows.....	14
2.2.1	Splash Page.....	14
2.2.2	Switching from Windows to Android	14
2.2.3	Switching from Android to Windows	15
2.3	Connecting to PC.....	16
2.3.1	Changing your display to portrait mode (Windows)	18
3.	F.A.Qs and Troubleshooting Guide	20
3.1	My Screen is not displaying what is on my PC	20
3.1.1	Input Source	20
3.1.2	Display/monitor button on PC keyboard	20
3.2	My monitor's image is unstable, unfocused or swimming	20

Table of Figures

Figure 1 Product Overview.....	6
Figure 2 Screen Inputs.....	13

1. Introduction

Congratulations on your purchase of our product. Please read carefully and follow all instructions in the manual before first use.

The product should not be exposed to liquids dripping or splashing and no objects filled with liquids, such as vases, should be placed on the product.

For user convenience, a number of operations can be performed through the remote control.

Attention:

1. Do not change any default setting when it is unnecessary.
2. Keep the product far away from water during installation and use.

1.1 Box Contents

- 1xFreestanding Multi-Touch Screen
- 1xRemote Control (with AAA batteries)
- 1xHDMI Cable
- 1xLocker Door Key
- 1xC14 to C6/C13 Y Power Splitter
- 1xCD (User Manual)

IMPORTANT: Please retain your screen's packaging for the duration of your warranty.

1.2 Product Overview

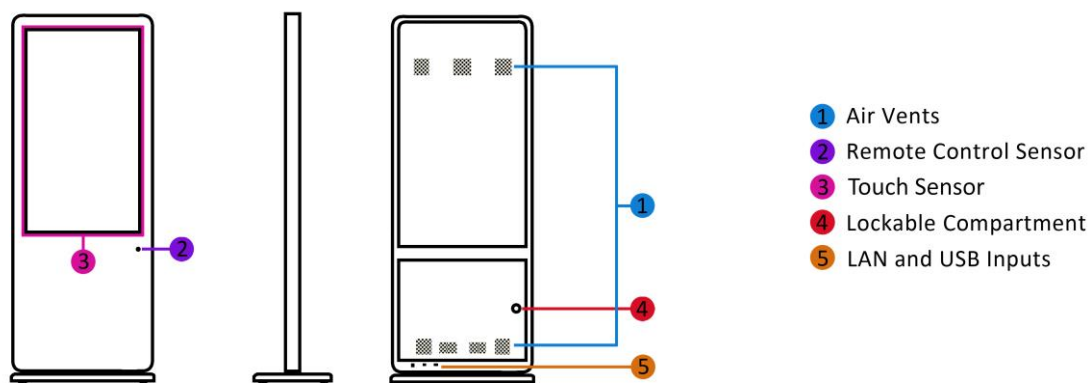


Figure 1 Product Overview

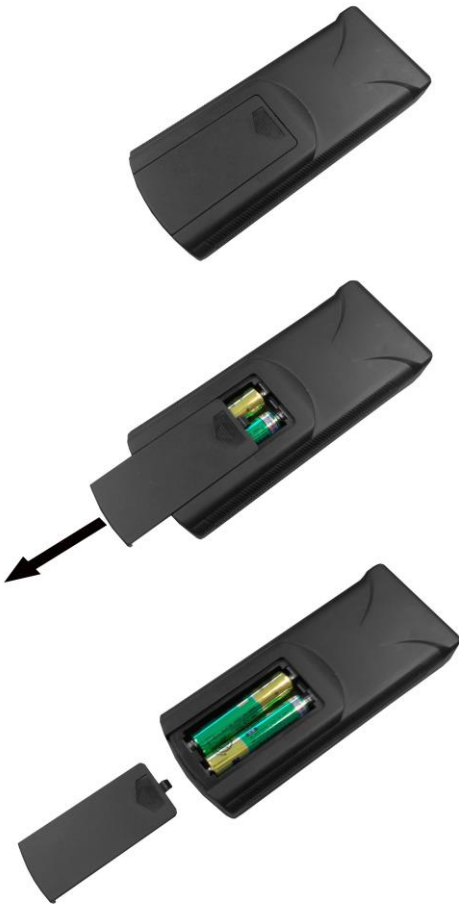
1.3 Remote Control



Button	Function
POWER/⏻	Power on or off
MENU	Display settings
SETUP	Menu settings
SOURCE/↶	Input source
▲	Up (navigation)
◀	Left (navigation)
▶	Right (navigation)
▼	Down (navigation)
▶/	Play media
■	Stop media
◀◀	Previous
▶▶	Next
🔇	Display settings
🔊+	Raise volume
🔊-	Lower volume

1.4 Replacing the Remote Control Battery

1. Slide the battery cover off, as shown below.
2. Remove the used batteries.
4. Insert the two new AAA batteries with their terminals corresponding to the indicators.
5. Put the cover back on.



2. Menu Operation

The Menu features the following sections: Picture, Sound, Time and Option.

Press "MENU" to bring up the menus, press ←→ to select the desired menu and ↑↓ to select the desired item, press "PLAY" to confirm selection. Press "Menu" at any time to go back or exit.

Picture

Here is where you can edit settings such as brightness, contrast, colour temperature and backlight brightness. Any settings that you change can be reset back to default at any time.

Picture Mode	<Standard>	or Mild/User/Dynamic	
	User	Contrast	50
		Brightness	50
		Colour	50
		Sharpness	50
		Tint	50
Color Temperature	<Medium>	or Warm/User/Cool	
Aspect Ratio	<16:9>	or Auto/4:3/Zoom1/Zoom2/Just Scan/Panorama/PointToPoint	
Noise Reduction	<Middle>	or Off/Low/High/Default	
Screen			
Backlight	<100>	or 1-100	
Color Range	<16~235>	or 0~255	

Sound

In this menu you can adjust all of the sound settings for your monitor such as the sound mode EQ settings or the left/right balance. Any settings that you change can be reset back to default at any time.

Sound Mode	<Standard>	or Music/Movie/Sports/User
Balance	<0>	-50(left) to +50(right)
Auto Volume	<Off>	or On
Surround Sound	<Off>	or Surround
EQ	120 Hz	50
	500 Hz	50
	1.5K Hz	50
	5K Hz	50
	10K Hz	50

Time

Here you can set a time and date for your screen as well as scheduling daily on/off times for the built in power timer. You can also adjust at what temperature the internal fans become active.

Clock	<DATE and TIME>	Date Month Year Hour Minute		
OnOff Time	<Off>	Setting Mode	Daily Mode/Weekly Mode	
		Control Mode	Manual/Always on/Always off/Timer	
		<i>Status</i>	<i>On Time</i>	<i>Off Time</i>
		Off/On	00:00	00:00
		Off/On	00:00	00:00
		Off/On	00:00	00:00
		Off/On	00:00	00:00
		Off/On	00:00	00:00
Sleep Timer	<Off>	or 10min/20min/30min/60min/90min		
Auto Sleep	<Off>	or On		

Option

Under this menu are settings like on screen display language, on screen display duration time, and the video wall tiling settings. You can also restore all of the menus default settings and lock your screen so as you have to enter a password to access any of the menus.

OSD Language	<English>	or 中文
Blending	<Low>	or Middle/High/Off
HDMI CEC	Device List	
	HDMI CEC	On/Off
	Auto Standby	On/Off
OSD Duration	<Off>	or 5sec/10sec/15sec
Software Update (USB)		

2.1 Inputs

Touch USB Cable – Universal Serial Bus (hanging cable for Infrared touch panel)

LAN Port – For internal PC

HDMI – High Definition Multimedia Interface Signal Input

VGA – Video Graphics Array Signal Input

Audio In – 3.5mm Stereo Jack (for audio input)

USB Port (x2) – For internal Android media player

Power IN – Power cable connected to mains outlet

Power OUT – For C13 to C5/C13 Y Power Splitter to supply power to external device

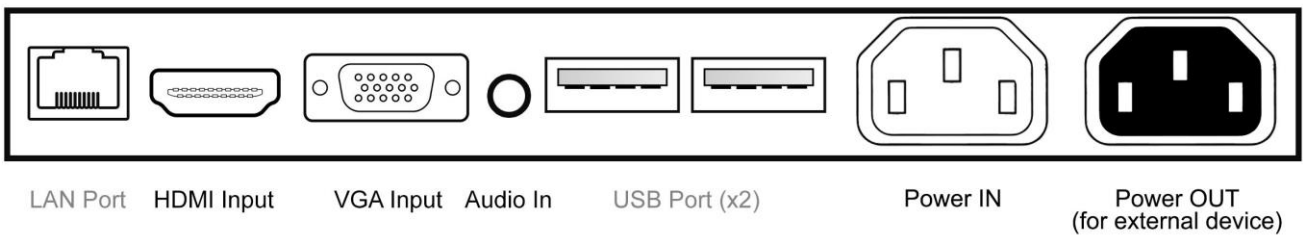


Figure 2 Screen Inputs

Switching between inputs

One crucial feature that does not appear on the Main Menu is selecting the input source. This is done by first pressing the “SOURCE” button on the remote control and then scrolling down to the desired input source and select by pressing “PLAY”.

PC-RGB
OPS
HDMI

2.2 Switching between Android and Windows

2.2.1 Splash Page

When you turn your screen on for the first time you will see an option screen allowing you to choose which operating system you would like to run; Android or Windows. This page will appear each time the screen is restarted.

If you want the screen to boot up and load the last operating system that it was running this splash page can be disabled. To disable this page from launching toggle the "MENU" option in the top left hand corner to "OFF" then select your operating system. To enable the splash page again launch the Windows operating system then open the "WinToAnd" program and switch the "Always show UI" slider to "Enabled". Then click "Switch to Android". When the screen is restarted it will now load the splash screen again allowing you to choose which operating system you want to launch.

2.2.2 Switching from Windows to Android

Once you have launched the Windows operating system you will see an icon on the desktop called "WinToAnd" that looks like this:



WinToAnd

NOTE: If the icon does not appear on the Desktop then you can search for the program by pressing the Windows logo key (⊞) then typing "WinToAnd" then launching the application from there.

Launch this program and when the "User Account Control" box appears select "Yes". Then the "Switch to Android" box will appear; this allows you to enable or disable the "splash page" on start up. Next click the "Switch to Android" button, you will then be asked to confirm your selection, click "Yes". Finally, you will be greeted by a "Set Variable Success" box, click "OK".

The screen will now shut down Windows and launch the Android operating system. Please allow a few minutes for this to occur.

2.2.3 Switching from Android to Windows

Once you have launched the Android operating system you will see an icon on the apps list called "Boot to Windows" that looks like this:



Boot to Windows

Launch this app and the screen will shut down Android and launch the Windows operating system. Please allow a few minutes for this to occur.

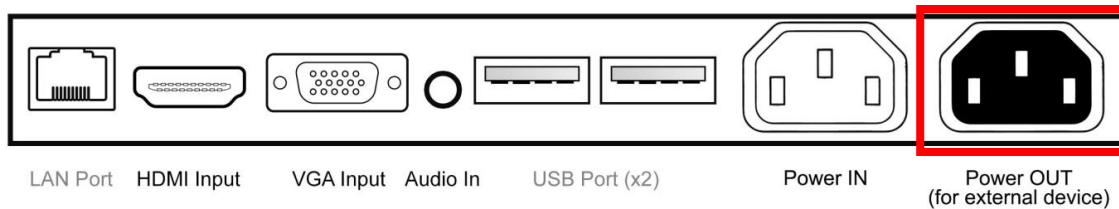
2.3 Connecting to PC

The touch screen must be connected to the PC in two ways: visually and interactively. The recommended visual connection is via the HDMI Cable (included) meaning that the display acts like a monitor for the PC. The touch function is achieved by linking the Infrared touch sensors around the screen to the PC via the USB Cable (included).

This section of the guide is to allow rapid set up and use of the unit. Please refer to the main part of the User Guide for full information on use of the unit.

Please follow the steps detailed below:

1. Insert the female end of the C14 to C6/C13 Y Power Splitter into the female power OUT socket inside the locker door:



2. Connect your PC to the male end of this splitter; either via the C6 or C13 connection (please ensure you have a mouse connected to your PC).
3. Connect the screen to the PC via the USB cable hanging from the left hand side of the inputs.
4. Connect the screen to the PC via the HDMI cable provided:

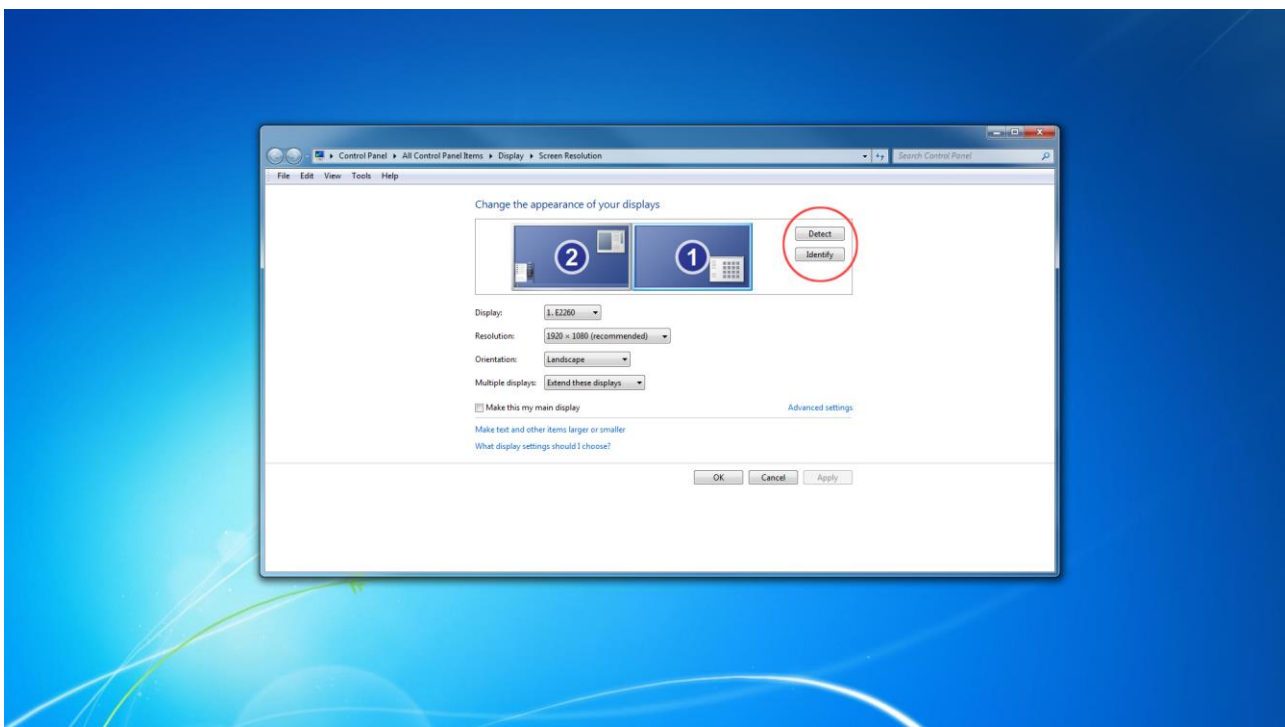


5. Plug the screens power cable into the mains which should power on both the screen and the PC.
6. Access the display options from your Control Panel or right-click on your Desktop and choose "Screen resolution".
7. Select the "Orientation" dropdown menu then click on "Portrait (flipped)".

8. Click "OK" and your screen contents and operations will now be rotated 90° clockwise.
9. You may be asked "Do you want to keep these display settings?" click on "Keep changes".
10. The screen should now be acting as a monitor and allowing you to use your finger as a mouse on the screen displaying the PC's contents.
11. If the screen does not display the signal from the PC then connect press the "SOURCE" button on the remote control and navigate to "HDMI" and press "PLAY".

IMPORTANT: If the Touch Screen is the only monitor connected to your PC NO NOT take the following step. Only proceed with the following if you are using a laptop or another monitor is connected to your PC.

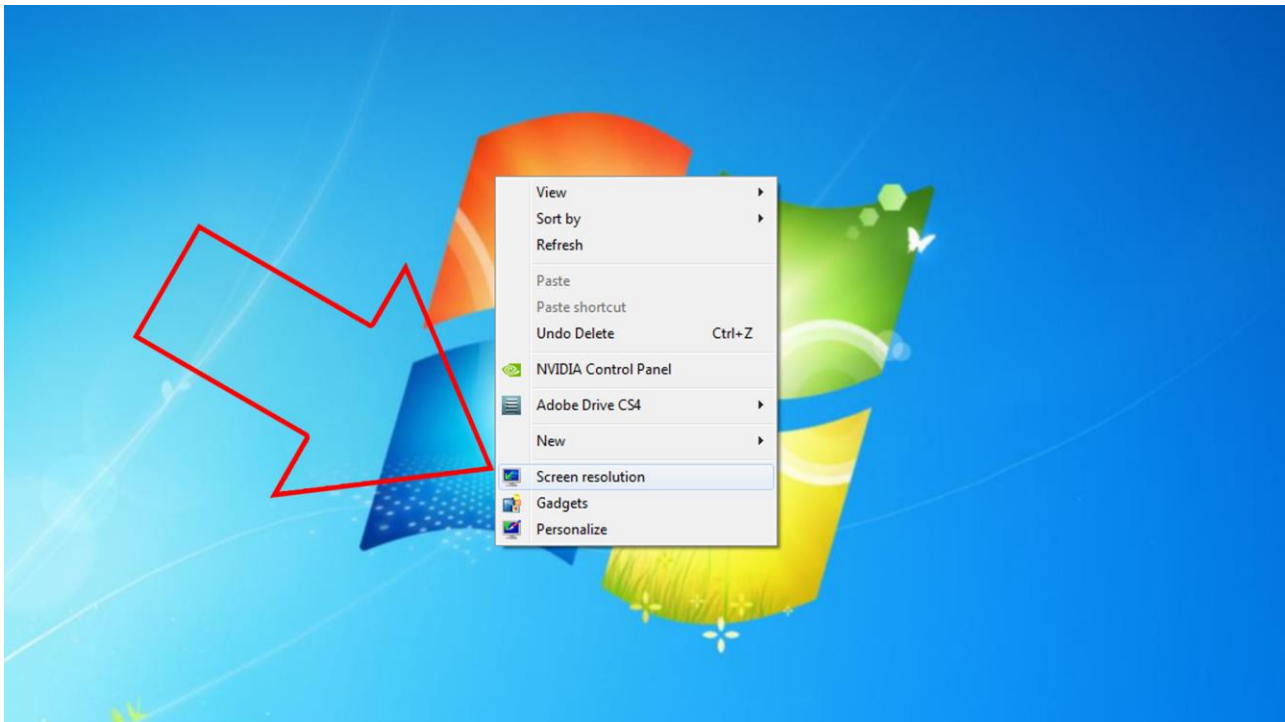
Access the display options from your Control Panel or right-click on your Desktop and choose "Properties" (then "Settings") or "Screen resolution". You should now click "Detect" to allow the PC to discover the Video Monitor then "Identify" to establish which display is the Video Monitor.



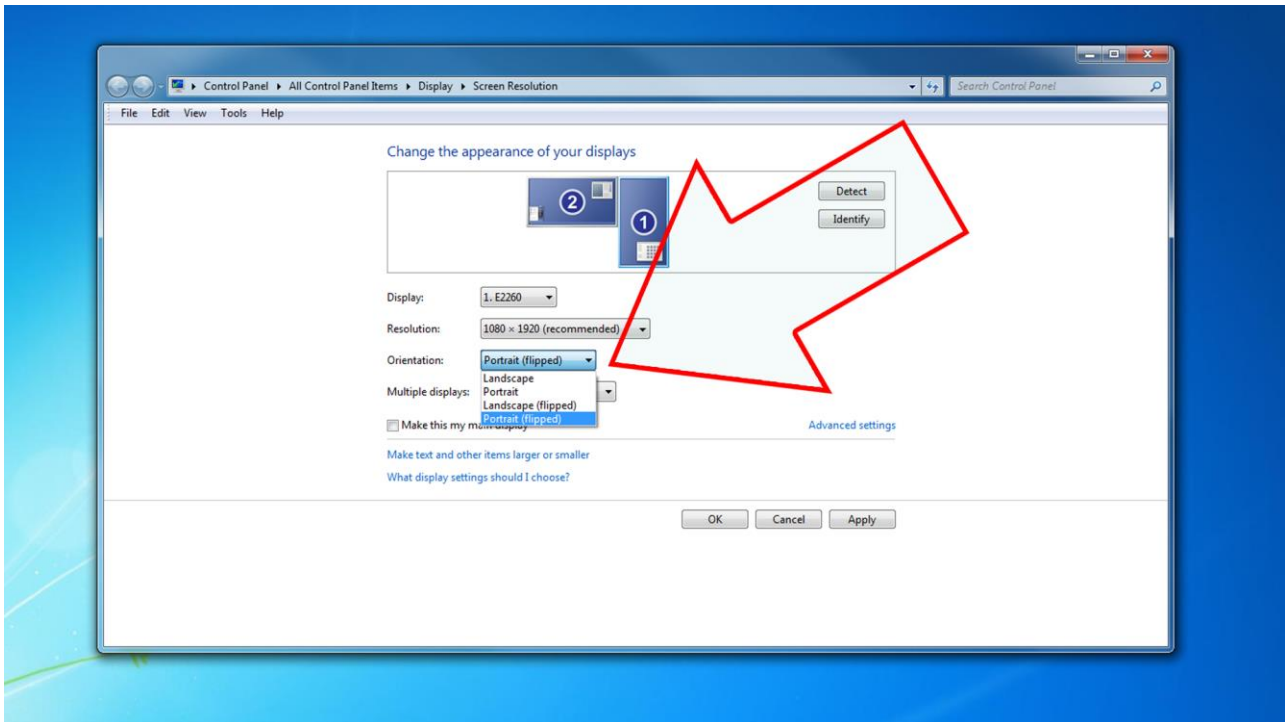
Select the display that corresponds with the Video Monitor display then check the box "Make this my main display" or "Use this device as the primary monitor". This will make the Video Monitor display your main monitor.

2.3.1 Changing your display to portrait mode (Windows)

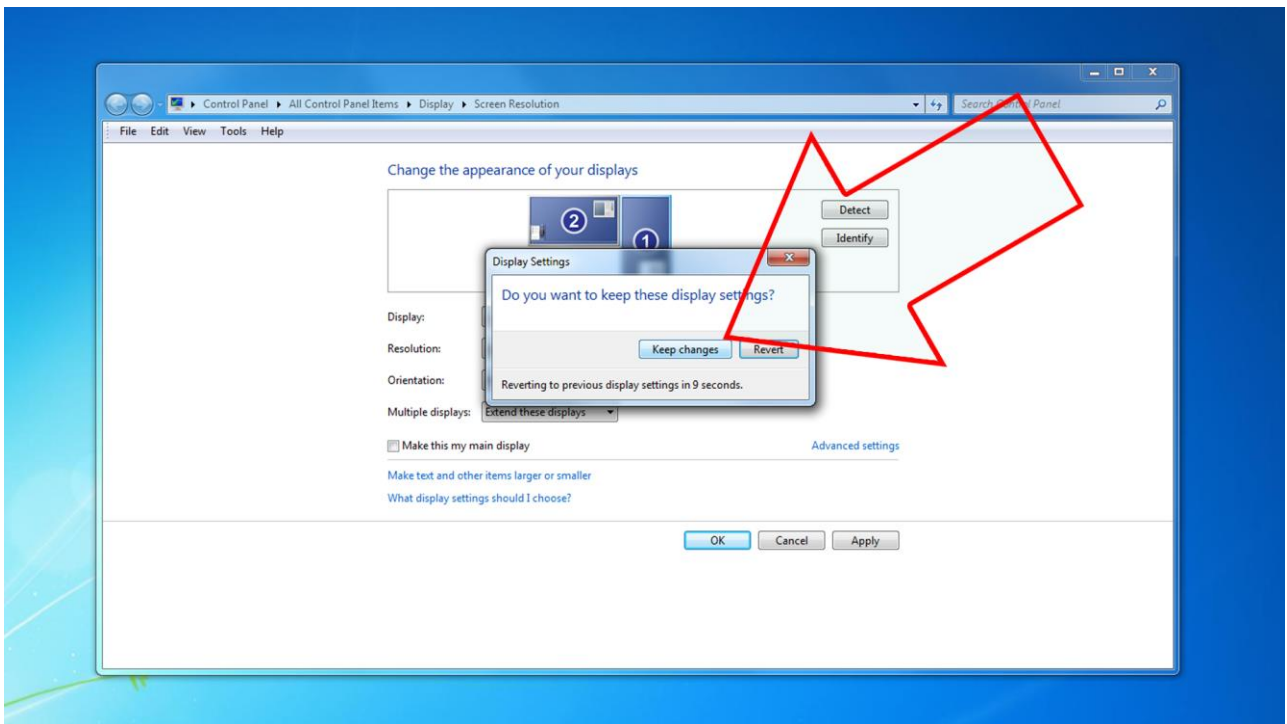
First ensure that you have connected to touch screen to the PC via the HDMI cable. Still using your mouse access the display options from your Control Panel or right-click on your Desktop and choose "Screen resolution".



Select the "Orientation" dropdown menu then click on "Portrait (flipped)".



Click "OK" and your screen contents and operations will now be rotated 90° clockwise. You may be asked "Do you want to keep these display settings?" click on "Keep changes".



3. F.A.Qs and Troubleshooting Guide

3.1 My Screen is not displaying what is on my PC

3.1.1 Input Source

Your screen may be sourcing its display from another input. First ensure that your screen is connected to your PC (or other video source) via one of the inputs. Next, press "SOURCE" and then navigate to the input source that corresponds with the one you are using and select by pressing "PLAY".

PC-RGB
OPS
HDMI

3.1.2 Display/monitor button on PC keyboard

If you are sourcing your video signal from a PC your keyboard may have a display/monitor button on it, especially if you are using a laptop. If your Video Monitor does not display the content of the PC try hitting this button before contacting your supplier.

3.2 My monitor's image is unstable, unfocused or swimming

Firstly check that the video signal cable should be firmly connected to the monitor and the PC. Next, check the monitor and your display card with respect to compatibility and recommended signal timings.

If your text is blurred, reformat the video mode to "non-interlaced" and use 60Hz refresh rate.